

# Technical Memorandum

January 25, 2025

To: Melissa Ackert, PE; Fadi Emil Nassar, Ph.D., PE, PTOE; Motasem Al-Turk Ph.D., PE  
Palm Beach County

From: Jessica Josselyn; Travis Hills, PE, RSP<sub>1</sub>; Ryan Mansfield PE, RSP<sub>1</sub>; Jia Fang, PhD  
Kittelison & Associates, Inc.

RE: Palm Beach County SS4A Safety Action Plan – Safety Analysis Methodology

## INTRODUCTION

Kittelison & Associates, Inc. (Kittelison) was tasked by Palm Beach County (PBC) to conduct a safety analysis to develop a high injury network in support of the Safe Streets and Roads for All (SS4A) Safety Action Plan (SAP). This technical memorandum presents a proposed safety analysis methodology for the SAP. The study area includes all public county and state roads, excluding limited access facilities, within Palm Beach County limits.

The purpose of the safety analysis is to summarize crash trends by mode (vehicular (which includes freight), motorcycle, pedestrian, and bicycle) and identify a high injury network on county and state roadways. An analysis will be conducted, and actionable strategies will be developed that PBC can implement to meet their reduced fatal and serious injury crashes goal along their roadway segments and intersections.

This technical memorandum is broken down into the following sections:

- Data Requirements And Data Collection
- Safety Analysis Approach
- Safety Documentation
- Safety View (System) Methodology

## DATA REQUIREMENTS AND DATA COLLECTION

Data sources required for analysis have been identified and are documented in the sections below.

---

### Safety Data

---

Crash records will be obtained from the Florida Department of Transportation's (FDOT) Signal Four Analytics (S4) crash database (primary) and the County crash database

(secondary) for the study area. The safety analysis will be performed for the most recent five years of crash data (January 1, 2019 – December 31, 2023). Supplemental crash data from January 1, 2024, to October 31, 2024, will also be reviewed to verify crash trends and patterns. This methodology is consistent with guidance from the 2023 FDOT Safety Crash Data Guidance published by the State Safety Office<sup>1</sup>.

2023 and 2024 data is incomplete due to Florida Highway Safety and Motor Vehicles (FLHSMV) and FDOT processing time. Although initial reporting occurs within 10 days, FLHSMV allows an additional 90 days for final reporting and to receive crash data from enforcement agencies. FLHSMV's goal is to finalize the data for all crash severities within 7 to 10 months, and then FDOT verifies locations within 10 months for all crash severities after FLHSMV finalizes the annual data.

---

## Existing Roadways and Intersections

---

Study area roadways and intersections will be obtained from the following datasets:

- State Roads: FDOT Roadway Characteristics Inventory (RCI) data
- Street Centerlines: PBC (received on July 22<sup>nd</sup>, 2024)
- Signalized Intersections: PBC (received on Jan 22<sup>nd</sup>, 2025); FDOT Traffic Signal Maintenance and Compensation Agreement Exhibit A

---

## Roadway Characteristics

---

Roadway characteristics will be obtained from the following datasets:

- Number of Lanes: FDOT RCI data; PBC (received on Jan 2<sup>nd</sup>, 2025)
- Posted Speed: FDOT RCI data; PBC (received on Jan 2<sup>nd</sup>, 2025)
- Undivided/Divided Roadway: FDOT RCI data
- AADT: FDOT RCI data; PBC (received on July 22<sup>nd</sup>, 2024)

---

## Pedestrian and Bicycle Facilities

---

Pedestrian and bicycle facilities will be obtained from the following datasets:

- Sidewalks: FDOT RCI data; PBC (received on Jan 2<sup>nd</sup>, 2025)
- Bikeway Networks: FDOT RCI data; PBC (received on Jan 2<sup>nd</sup>, 2025)
- Shared Use Paths: FDOT RCI data; PBC (received on Jan 2<sup>nd</sup>, 2025)

---

<sup>1</sup> State Safety Office, Florida Department of Transportation. (04/17/2023). Safety Crash Data Guidance. [https://fdotwww.blob.core.windows.net/sitefinity/docs/default-source/safety/11a-safetyengineering/crash-data/25998\\_crash-data-process\\_v18.pdf?sfvrsn=b50e9f4e\\_2](https://fdotwww.blob.core.windows.net/sitefinity/docs/default-source/safety/11a-safetyengineering/crash-data/25998_crash-data-process_v18.pdf?sfvrsn=b50e9f4e_2)

- Crossing Types at Intersections: PBC (Requested, but not available)
- Midblock Crossings: PBC (received on Jan 22<sup>nd</sup>, 2025)
- Crosswalk Inventory Data: PBC (received on Jan 2<sup>nd</sup>, 2025)
- ADA Curb Ramp Inventory: PBC (Requested, but not available)

---

## Other Data

---

Other data to be used in the safety analysis will be obtained from the following datasets:

- Context Classification: FDOT RCI data
- Roadway Lighting: PBC (received on July 22<sup>nd</sup>, 2024)
- Equity Areas: US Department of Transportation (USDOT), using the Climate and Economic Justice Screening Tool (CEJST) and the Equitable Transportation Community (ETC) Explorer; PBC Countywide Community Revitalization Areas (received on Jan 2<sup>nd</sup>, 2025)
- PBC Planning Districts: PBC (received on Jan 2<sup>nd</sup>, 2025)
- PBC City Boundaries: U.S. Census
- School Zones: PBC (received on Jan 2<sup>nd</sup>, 2025)
- Recent and Planned Roadway Improvement Projects: PBC (received on Jan 2<sup>nd</sup>, 2025)

# SAFETY ANALYSIS APPROACH

---

## Safety Indicators

---

The crash data set will be mapped in ArcGIS and overlaid with the FDOT/PBC data, roadway characteristics data, and other data identified above. Crashes will be summarized based on the following roadway segments and intersections:

- Crashes on Roadway Segments
  - County Roadways
  - FDOT's State Highway System (SHS) Roadways (excluding Limited Access)
- Crashes at Signalized Intersections
  - County Roads intersecting State Roads
  - County Roads intersecting County Roads
  - County Roads intersecting Local Roads (municipally owned)
  - State Roads intersecting State Roads
  - State Roads intersecting Local Roads (municipally owned)

Crash trends will be summarized by the following categories:

- Pedestrian – all crash severities (including Property Damage Only (PDO) crashes)

- Bicycle – all crash severities (including PDO crashes)
- Motorcycle – all crash severities (including PDO crashes)
- Vehicle – all crash severities (including PDO crashes)

---

## Crash Analysis

---

The crash data will be assessed by each of the safety indicators noted above along study area roadway segments and signalized intersections to identify high crash severity locations. A crash will be labeled as a segment crash or an intersection crash based on the following definitions:

- Segment Crash = A crash occurring along a roadway that is not within a 250-foot buffer around the center point of a signalized intersection
- Signalized Intersection Crash = A crash occurring within a 250-foot buffer around the center point of a signalized intersection

Crash data will be analyzed by the following four metrics:

1. High crash frequency;
2. High crash severity score;
3. Annual crash frequency rate by traffic volume compared to statewide rates and countywide rates; and
4. Annual crash severity rate by traffic volume compared to statewide rates and countywide rates.

The **severity score** will be calculated using the Highway Safety Manual (HSM) Equivalent Property Damage Only (EPDO) Methodology. Three different EPDO weights are proposed to calculate this measure. Once each calculation is completed, the results will be compared to determine which calculation will be used to develop the severity score for the High Injury Network. The three calculation using different weighting factors will be:

- Method A: HSM EPDO Methodology using FDOT KABCO Crash Costs
- Method B: HSM EPDO Methodology using Palm Beach County's Weighting Factors
- Method C: HSM EPDO Methodology using FDOT KABCO Crash Costs with Weighted Average Cost for KA Crashes

### Method A: HSM EPDO Methodology using FDOT KABCO Crash Costs

In this method, weighting factors related to the societal costs of fatal, injury, and property damage-only crashes are assigned to crashes to develop the EPDO score that considers frequency and severity of crashes. FDOT KABCO (K=fatal, A=incapacitating injury, B=non-incapacitating injury, C=possible injury, O=property damage only) crash costs are retrieved from the 2024 FDOT Design Manual Table 122.6.2. The crash costs for each crash

severity are divided by the crash cost of a property damage only crash (\$7,700) to get the weighted factors as seen in **Table 1**.

**Table 1 EPDO Methodology Crash Costs and Weighting Factors**

Severity	Crash Cost	Ratio	Weighting Factor
<b>Fatal (K)</b>	\$10,890,000	\$10,890,000 / \$7,700	1,414
<b>Incapacitating Injury (A)</b>	\$888,030	\$888,030 / \$7,700	115
<b>Non-Incapacitating Injury (B)</b>	\$180,180	\$180,180 / \$7,700	23
<b>Possible Injury (C)</b>	\$103,950	\$103,950 / \$7,700	14
<b>Property Damage Only (O)</b>	\$7,700	\$7,700 / \$7,700	1

FDOT Design Manual, January 1, 2025. Table 122.6.2 FDOT KABCO Crash Costs.

**Severity Score Example:** if you have a roadway segment that experienced one fatal crash, and two serious injury crashes over a period of five years, the annual EPDO score would be calculated as shown below:

- One Fatal Crash =  $(1 * \$10,890,000) / \$7,700 = 1,414$
- Two Incapacitating Injury Crashes =  $(2 * \$888,030) / \$7,700 = 231$
- Five Year EPDO score =  $1,414 + 231 = 1,645$
- Annual EPDO score =  $1,645 / 5 = 329$

Method B: HSM EPDO Methodology using PBC Weighting Factors

In this method, the weighting factors shown in **Table 2** will be used for each crash severity.

**Table 2 PBC Weighting Factors**

Severity	Weighting Factor
<b>Fatal (K)</b>	50
<b>Incapacitating Injury (A)</b>	20
<b>Non-Incapacitating Injury (B)</b>	10
<b>Possible Injury (C)</b>	5
<b>Property Damage Only (O)</b>	1

Method C: HSM EPDO Methodology using FDOT KABCO Crash Costs with Weighted Average Cost for KA Crashes

In this method, an average weight will be calculated for combined fatal and incapacitating injury (K and A) crashes based on the number of K and A crashes on the

study network. Crash costs used in the calculations will be the same FDOT KABCO crash costs shown in **Table 1**.

$$SWC_{KA} = C_K \frac{N_K}{N_{KA}} + C_A \frac{N_A}{N_{KA}}$$

Where: SWC = severity-weighted cost for two severities

C = FDOT crash unit cost for a given severity

N = number of crashes of a given severity or group of severities

The **annual crash frequency rate** will be calculated as follows:

$$\text{Annual Crash Frequency Rate} = \frac{\text{crash frequency} \times 100,000,000}{\text{AADT} \times 365 \times n \text{ years} \times \text{segment length}}$$

The **annual crash severity rate** will be calculated as follows:

$$\text{Annual Crash Severity Rate} = \frac{\text{severity score} \times 100,000,000}{\text{AADT} \times 365 \times n \text{ years} \times \text{segment length}}$$

---

## High Injury Network & Segmentation

---

Once the crash analysis has been performed based on the methodology in the previous section, a high injury network (HIN) will be developed for the following roadway segment and intersection groups:

- Roadway Segments\*:
  - County Roadways
  - FDOT's State Highway System (SHS) Roadways (excluding Limited Access)
- Signalized Intersections:
  - County Roads intersecting State Roads
  - County Roads intersecting County Roads
  - County Roads intersecting Local Roads (municipally owned)
  - State Roads intersecting State Roads
  - State Roads intersecting Local Roads (municipally owned)

\*Corridor endpoints will be identified based on the roadway segmentation provided by PBC.

To incorporate all roadway users, four different HINs are proposed for each group mentioned above: vehicle, pedestrian, bicycle, and motorcycle. The roadway segment HINs will be developed by applying an average ranking score to the four crash analysis methods outlined in the **Crash Analysis** section. Corridor endpoints will be identified based on the roadway segmentation provided by PBC. The signalized intersection HINs

will be developed by applying an average ranking score to the first two crash analysis methods only (crash frequency and crash severity score).

---

## Census Analysis

---

Disadvantaged Census tracts will be identified using three sources: USDOT ETC and CEJST (both supported by the SS4A grant literature), and PBC's Countywide Community Revitalization Areas data. The disadvantaged Census tracts will be overlaid with the high crash locations by mode to help with identification of strategies in these traditionally transportation disadvantaged communities.

## SAFETY DOCUMENTATION

Following this methodology memorandum, the safety analysis will produce a series of individual deliverables. For each deliverable submitted, PBC will be given the opportunity for one round of review and comment. The deliverables include the following:

1. Safety Analysis and Summary Technical Memorandum
2. Identified HINs in tabular and map format
3. GIS files with HINs

## SAFETY VIEW METHODOLOGY

The INRIX Safety View tool is a cloud-based analytics solution developed by GM and INRIX that provides comprehensive safety data and sophisticated analytics to help public agencies create informed safety plans. It combines crash, vehicle, vulnerable road user, and demographic data to identify and prioritize dangerous roadway segments. This tool supports the evaluation of safety projects and helps in the application process for safety-related funding.

The specific inputs and application of the tool outputs within the PBC SAP will be determined following the approval of the crash data analysis methodology outlined herein. This two-step process will help ensure compatibility, efficiency, and enhancements to the proposed traditional/standard crash analysis. It is anticipated the tool will be most helpful in proactively identifying high risk locations using the hard braking, near miss, and speed data provided with the subscription.

**Motor Vehicle Intersection HIN Top 25 Locations**

HIN Intersection GIS ID	East/West Street Name	North/South Street Name	Category	Vehicle Fatal Crashes	Vehicle Serious Injury Crashes	Vehicle Non-incapacitating Injury Crashes	Vehicle Possible Injury Crashes	Vehicle No Injury Crashes	Final HIN Rank
341	OKEECHOBEE BLVD	MILITARY TR	State Rd/State Rd	0	4	25	67	384	1
265	FOREST HILL BLVD	MILITARY TR	State Rd/State Rd	1	0	19	56	344	2
139	WEST ATLANTIC AVE	MILITARY TR	State Rd/County Rd	2	4	9	31	331	3
254	FOREST HILL BLVD	SR 7/US 441	State Rd/State Rd	0	0	32	26	313	3
347	OKEECHOBEE BLVD	JOG RD	State Rd/County Rd	0	4	12	30	323	5
234	LAKE WORTH RD	JOG RD	State Rd/County Rd	0	0	24	39	277	6
1771	PALM BEACH LAKES BLVD	SPENCER DR/VILLAGE BLVD	County Rd/Local Rd	0	1	20	39	288	7
342	OKEECHOBEE BLVD	HAVERHILL RD	State Rd/County Rd	0	1	24	36	269	8
24	10TH AVE N	MILITARY TR	State Rd/County Rd	0	4	20	46	235	9
302	SOUTHERN BLVD	SANSBURY'S WAY	State Rd/County Rd	1	2	16	45	247	10
263	FOREST HILL BLVD	JOG RD	State Rd/County Rd	0	1	22	32	272	11
353	OKEECHOBEE BLVD	SR 7/US 441	State Rd/County Rd	0	2	21	35	244	12
200	LANTANA RD	CONGRESS AVE	County Rd/County Rd	1	2	15	36	247	13
357	COMMUNITY DR	MILITARY TR	State Rd/County Rd	0	1	29	42	208	14
243	10TH AVE N	CONGRESS AVE	State Rd/County Rd	0	0	13	46	262	15
423	PGA BLVD	MILITARY TR	State Rd/County Rd	0	0	8	32	312	16
534	LINTON BLVD	MILITARY TR	County Rd/County Rd	1	4	13	30	246	16
1666	PALM BEACH LAKES BLVD	ROBBINS DR	County Rd/Local Rd	0	0	13	23	313	18
1758	LANTANA RD	JOG RD	County Rd/County Rd	0	2	13	25	279	19
591	LANTANA RD	MILITARY TR	County Rd/County Rd	0	2	17	41	227	20
1871	45TH ST	CONGRESS AVE	County Rd/County Rd	0	0	11	29	294	21
231	LAKE WORTH RD	MILITARY TR	State Rd/County Rd	0	3	13	46	220	22
305	SOUTHERN BLVD	SR 7/US 441	State Rd/State Rd	0	0	7	30	312	22
338	OKEECHOBEE BLVD	PALM BCH LAKES BLVD/WABAS	State Rd/County Rd	0	3	12	23	273	22
321	WESTGATE AVE/ELMHURST F	MILITARY TR	State Rd/County Rd	0	0	29	32	214	25

**Motorcycle Intersection HIN Top 25 Locations**

HIN Intersection GIS ID	East/West Street Name	North/South Street Name	Category	Motorcycle Fatal Crashes	Motorcycle Serious Injury Crashes	Motorcycle Non-incapacitating Injury Crashes	Motorcycle Possible Injury Crashes	Motorcycle No Injury Crashes	Final HIN Rank
24	10TH AVE N	MILITARY TR	State Rd/County Rd	1	1	1	1	1	1
169	OCEAN AVE	FEDERAL HWY	State Rd/State Rd	1	0	2	1	1	2
1815	LAKE IDA RD	CONGRESS AVE	County Rd/County Rd	0	2	1	2	0	3
234	LAKE WORTH RD	JOG RD	State Rd/County Rd	0	2	1	0	3	4
316	BELVEDERE RD	MILITARY TR	State Rd/County Rd	0	0	5	0	2	5
347	OKEECHOBEE BLVD	JOG RD	State Rd/County Rd	1	0	0	1	2	6
146	WEST ATLANTIC AVE	NW/SW 8TH AVE	State Rd/Local Rd	0	2	1	1	0	7
535	HYPOLUXO RD	MILITARY TR	County Rd/County Rd	0	2	0	1	2	8
1735	10TH AVE N	KIRK RD	County Rd/County Rd	1	0	0	0	3	9
432	PGA BLVD	ELLISON WILSON RD	State Rd/County Rd	0	1	1	0	3	10
318	CHERRY RD	MILITARY TR	State Rd/County Rd	0	1	2	1	0	11
344	OKEECHOBEE BLVD	FLA TURNPIKE	State Rd/State Rd	1	1	0	1	0	12
1654	SUMMIT BLVD	JOG RD	County Rd/County Rd	1	1	0	1	0	12
1899	PALMETTO PARK RD	I-95 W	State Rd/County Rd	1	1	0	0	1	14
194	HYPOLUXO RD	FEDERAL HWY	State Rd/County Rd	1	0	1	1	0	15
357	COMMUNITY DR	MILITARY TR	State Rd/County Rd	1	0	1	1	0	15
63	PALMETTO PARK RD	FEDERAL HWY	State Rd/Local Rd	0	1	1	1	1	17
584	SW 18TH ST	POWERLINE RD	County Rd/County Rd	1	0	1	0	1	17
321	STGATE AVE/ELMHURST	MILITARY TR	State Rd/County Rd	0	0	3	1	0	19
256	FOREST HILL BLVD	CONGRESS AVE	State Rd/State Rd	0	1	1	0	2	20
1855	MELALEUCA LN/6TH AVE	CONGRESS AVE	County Rd/County Rd	0	0	1	3	1	21
149	WEST ATLANTIC AVE	I-95 EAST	State Rd/State Rd	0	1	0	1	2	22
549	NORTHLAKE BLVD	OLD DIXIE HWY	County Rd/County Rd	0	2	1	0	0	22
342	OKEECHOBEE BLVD	HAVERHILL RD	State Rd/County Rd	0	0	2	0	3	24
75	N FEDERAL HWY	NW SPANISH RIVER BLVD	State Rd/State Rd	0	0	2	1	1	25
103	GLADES RD	LYONS RD	State Rd/County Rd	0	0	1	2	2	25
1861	ROEBUCK RD	HAVERHILL RD	County Rd/County Rd	0	0	2	1	1	25
1982	MELALEUCA LN	DAVIS RD	County Rd/County Rd	0	0	2	1	1	25

**Pedestrian Intersection HIN Top 25 Locations**

HIN Intersection GIS ID	East/West Street Name	North/South Street Name	Category	Pedestrian Fatal Crashes	Pedestrian Serious Injury Crashes	Pedestrian Non-incapacitating Injury Crashes	Pedestrian Possible Injury Crashes	Pedestrian No Injury Crashes	Final HIN Rank
343	OKEECHOBEE BLVD	MERIDIAN RD	State Rd/County Rd	4	0	2	0	2	1
265	FOREST HILL BLVD	MILITARY TR	State Rd/State Rd	1	1	1	6	0	2
206	6TH AVE S	DIXIE HWY	State Rd/County Rd	0	3	3	3	0	3
1855	MELALEUCA LN/6TH AVE S	CONGRESS AVE	County Rd/County Rd	2	2	1	0	1	4
172	BOYNTON BEACH BLVD	CONGRESS AVE	State Rd/County Rd	2	0	2	1	1	5
341	OKEECHOBEE BLVD	MILITARY TR	State Rd/State Rd	0	2	4	3	0	6
1866	MARTIN LUTHER KING BLVD/NW 10TH AVE	SEACREST BLVD	County Rd/Local Rd	1	2	1	1	0	7
1726	PALM BEACH LAKES BLVD	AUSTRALIAN AVE	County Rd/County Rd	0	2	2	1	1	8
551	MELALEUCA LN	MILITARY TR	County Rd/County Rd	1	2	1	0	0	9
155	EAST ATLANTIC AVE	NE/SE 5TH AVE	State Rd/State Rd	1	1	1	1	0	10
368	45TH ST	BROADWAY	State Rd/County Rd	1	1	1	1	0	10
1920	10TH AVE N	BOUTWELL RD	County Rd/Local Rd	1	1	0	1	1	12
274	FOREST HILL BLVD	PARKER AVE	State Rd/Local Rd	1	0	1	1	1	13
1865	PALM BEACH LAKES BLVD	CONGRESS AVE	County Rd/County Rd	0	1	2	2	1	14
1771	PALM BEACH LAKES BLVD	SPENCER DR/VILLAGE BLVD	County Rd/Local Rd	0	1	3	1	0	15
329	OKEECHOBEE BLVD	ROSEMARY AVE	State Rd/Local Rd	0	2	2	0	0	16
1871	45TH ST	CONGRESS AVE	County Rd/County Rd	1	0	0	1	2	17
239	7TH AVE N	DIXIE HWY	State Rd/Local Rd	2	1	0	0	0	18
337	OKEECHOBEE BLVD	SPENCER DR	State Rd/Local Rd	2	0	0	1	0	19
214	LAKE WORTH RD	AKRON ST	State Rd/Local Rd	1	2	0	0	0	20
342	OKEECHOBEE BLVD	HAVERHILL RD	State Rd/County Rd	1	2	0	0	0	20
90	SW 18TH ST/MARINA BLVD	SR 7/US441	State Rd/County Rd	1	1	0	1	0	22
1957	NORMANDY LA	JOG RD	County Rd/Local Rd	1	0	2	0	0	23
2031	PALM BEACH LAKES BLVD	FORUM WAY	County Rd/Local Rd	1	0	2	0	0	23
321	WESTGATE AVE/ELMHURST RD	MILITARY TR	State Rd/County Rd	0	0	3	2	1	25

**Bicycle Intersection HIN Top 25 Locations**

HIN Intersection GIS ID	East/West Street Name	North/South Street Name	Category	Bike Fatal Crashes	Bike Serious Injury Crashes	Bike Non-incapacitating Injury Crashes	Bike Possible Injury Crashes	Bike No Injury Crashes	Final HIN Rank
347	OKEECHOBEE BLVD	JOG RD	State Rd/County Rd	1	1	6	1	0	1
263	FOREST HILL BLVD	JOG RD	State Rd/County Rd	0	0	7	4	2	2
265	FOREST HILL BLVD	MILITARY TR	State Rd/State Rd	0	1	3	5	3	3
56	INDIANTOWN RD	LOXAHATCHEE DR	State Rd/Local Rd	1	0	3	1	1	4
15	LINTON BLVD	A1A	State Rd/County Rd	0	3	1	0	2	5
24	10TH AVE N	MILITARY TR	State Rd/County Rd	0	0	2	7	0	6
230	LAKE WORTH RD	KIRK RD	State Rd/County Rd	0	1	2	3	1	6
200	LANTANA RD	CONGRESS AVE	County Rd/County Rd	2	0	1	1	1	8
68	GLADES RD	NW 2ND AVE	State Rd/Local Rd	0	1	3	1	1	9
1893	BELVEDERE RD	PARKER AVE	County Rd/Local Rd	0	0	4	2	1	10
231	LAKE WORTH RD	MILITARY TR	State Rd/County Rd	0	0	4	1	2	11
1758	LANTANA RD	JOG RD	County Rd/County Rd	0	1	1	3	0	12
234	LAKE WORTH RD	JOG RD	State Rd/County Rd	0	1	1	2	1	13
1630	BELVEDERE RD	FLA MANGO RD	County Rd/County Rd	0	2	2	0	0	14
341	OKEECHOBEE BLVD	MILITARY TR	State Rd/State Rd	0	1	1	1	2	15
264	FOREST HILL BLVD	KIRK RD	State Rd/County Rd	0	0	3	1	1	16
1679	10TH AVE N	JOG RD	County Rd/County Rd	0	2	1	1	0	17
402	PALMETTO RD/LAKE SHORE DR	US 1	State Rd/Local Rd	0	0	2	3	0	18
139	WEST ATLANTIC AVE	MILITARY TR	State Rd/County Rd	0	1	2	0	1	19
551	MELALEUCA LN	MILITARY TR	County Rd/County Rd	0	1	1	2	0	20
91	SANDALFOOT BLVD	SR 7/US 441	State Rd/County Rd	0	1	1	1	1	21
96	PALMETTO PARK RD	POWERLINE RD	County Rd/County Rd	0	1	1	1	1	21
1919	LINTON BLVD	HOMWOOD BLVD	County Rd/Local Rd	0	1	1	1	1	21
20	WOOLBRIGHT RD/BEACHWAY DR	A1A	State Rd/County Rd	0	1	0	3	0	24
246	CRESTHAVEN BLVD	MILITARY TR	State Rd/County Rd	0	0	3	1	0	24
1975	LINTON BOULEVARD	LAVERS AVENUE	County Rd/Local Rd	0	0	3	1	0	24

**Motor Vehicle Segment HIN Top 25 Locations**

HIN Segment GIS ID	Street Name	Start Road Name	End Road Name	Length (mi)	State Road (Yes/No)	Vehicle Fatal Crashes	Vehicle Serious Injury Crashes	Vehicle Non-incapacitating Injury Crashes	Vehicle Possible Injury Crashes	Vehicle No Injury Crashes	Final HIN Rank
866	W ATLANTIC AVE	NW 24TH AVE	N CONGRESS AVE	0.29	YES	1	9	9	15	218	1
815	SOUTHERN BLVD	JOG RD	AVOCADO AVE	0.77	YES	1	5	13	26	82	2
200	N DIXIE HWY	5TH AVE N	2ND AVE N	0.25	YES	0	1	13	20	107	3
498	LAKE AVE	LAKE WORTH RD	N E ST	0.25	YES	0	1	9	10	124	4
145	W ATLANTIC AVE	SW 10TH AVE	SW 7TH AVE	0.15	YES	0	1	11	15	106	5
1067	W ATLANTIC AVE	I-95 S OFF RAMP AT W ATLANTIC AVE	N CONGRESS AVE	0.22	YES	0	3	4	13	169	6
516	LUCERNE AVE	LAKE WORTH RD	N E ST	0.24	YES	0	1	6	13	103	7
3204	6TH AVE S	DIXIE HWY	S A ST	0.48	No	0	2	11	23	140	8
743	S MILITARY TRL	HOLIDAY WAY	FOREST HILL BLVD	0.38	YES	0	1	16	25	164	9
3095	10TH AVE N	N DETROIT ST	BOUTWELL RD	0.19	No	0	3	12	12	96	10
288	SOUTHERN BLVD	SR 7	FAIRGROUNDS RD	0.65	YES	0	0	5	26	92	11
309	OKEECHOBEE BLVD	N CONGRESS AVE	CHURCH ST	0.26	YES	1	0	2	27	134	12
5861	S SEACREST BLVD	W OCENA AVE	W WOOLBRIGHT RD	0.86	No	1	1	11	16	98	13
265	SE 5TH AVE	SE 5TH ST	SE 5TH AVE	0.32	YES	0	4	6	14	65	14
471	FOREST HILL BLVD	S MILITARY TRL	FOREST AVE	0.25	YES	0	2	7	15	123	15
699	S DIXIE HWY	9TH AVE S	12TH AVE S	0.25	YES	1	1	5	9	77	16
727	S MILITARY TRL	SOUTH OF CAMBRIDGE ST	LAKE WORTH RD	0.51	YES	1	2	19	26	121	17
5831	S JOG RD	DODD RD	PINE AVE	0.63	No	0	2	19	39	187	18
698	S DIXIE HWY	6TH AVE S	9TH AVE S	0.25	YES	0	2	9	9	64	19
6446	W GATEWAY BLVD	N CONGRESS AVE	NW 23RD ST	0.40	No	0	0	12	21	94	20
3105	10TH AVE N	S CONGRESS AVE	RUDOLF RD	0.28	No	0	2	3	9	112	21
3101	10TH AVE N	KIRK RD	HAVERRHILL RD	1.03	No	1	3	13	16	131	22
799	SE 5TH AVE	SE 5TH ST	SE 10TH ST	0.44	YES	0	1	4	10	85	23
3999	DREXEL RD	BELVEDERE RD	OKEECHOBEE BLVD	1.02	No	0	0	11	14	95	24
549	N MILITARY TRL	SOUTH OF RIDGE WAY DR	BELVEDERE RD	0.38	YES	1	2	5	16	104	25

**Motorcycle Segment HIN Top 25 Locations**

HIN Segment GIS ID	Street Name	Start Road Name	End Road Name	Length (mi)	State Road (Yes/No)	Motorcycle Fatal Crashes	Motorcycle Serious Injury Crashes	Motorcycle Non-incapacitating Injury Crashes	Motorcycle Possible Injury Crashes	Motorcycle No Injury Crashes	Final HIN Rank
586	OCEAN DR	ISLAND DR	RIVER DR	0.55	YES	2	0	0	1	1	1
982	S OCEAN BLVD	CARISSA RD	E LINTON BLVD	0.86	YES	1	2	1	2	0	2
200	N DIXIE HWY	5TH AVE N	2ND AVE N	0.25	YES	0	2	1	1	3	3
698	S DIXIE HWY	6TH AVE S	9TH AVE S	0.25	YES	1	1	0	1	1	4
3165	45TH ST	PREMIER PARK DR	N JOG RD	0.97	No	2	4	5	4	0	5
472	FOREST HILL BLVD	EAT OF BAY MEADOWS DR	S MILITARY TRL	0.25	YES	1	0	4	0	1	6
766	S OCEAN BLVD	E CAMINO REAL	NORTH OF OSCEOLA DR	0.57	YES	1	0	2	1	0	7
498	LAKE AVE	LAKE WORTH RD	N E ST	0.25	YES	0	2	0	0	2	8
558	N MILITARY TRL	COMMUNITY DR	OLD MILITARY TRL	0.50	YES	1	1	5	0	2	9
3097	10TH AVE N	DAVIS RD	S CONGRESS AVE	0.50	No	2	0	1	3	0	10
114	S OCEAN BLVD	E ATLANTIC AVE	CASUARINA RD	0.51	YES	0	2	0	0	3	11
471	FOREST HILL BLVD	S MILITARY TRL	FOREST AVE	0.25	YES	0	1	4	0	1	12
741	S MILITARY TRL	TELLIN AVE	SUMMIT BLVD	0.38	YES	1	2	2	0	1	13
260	S DIXIE HWY	17TH AVE N	13TH AVE N	0.32	YES	0	1	1	3	1	14
712	S FEDERAL HWY	12TH AVE S	E WINDWARD WAY	0.63	YES	1	0	1	0	1	15
4475	HYPOLUXO RD	OVERLOOK RD	SEACREST BLVD	0.52	No	0	2	1	1	0	16
460	FOREST HILL BLVD	PRAIRIE RD	FLORIDA MANGO RD	0.25	YES	2	0	0	1	1	17
635	OKEECHOBEE BLVD	HAVERHILL RD	WEST OF N MILITARY TRL	0.26	YES	1	2	0	0	3	18
528	FEDERAL HWY	MANATEE BAY DR	NE 6TH AVE	0.70	YES	1	0	2	1	1	19
699	S DIXIE HWY	9TH AVE S	12TH AVE S	0.25	YES	0	0	3	0	1	20
557	N MILITARY TRL	OLD MILITARY TRL	OKEECHOBEE BLVD	0.50	YES	1	2	1	2	0	21
717	S FEDERAL HWY	SOUTH OF SE 18TH AVE	SE 23RD AVE	0.25	YES	0	0	3	2	0	22
701	S DIXIE HWY	SOUTH OF 15TH AVE S	E WINDWARD WAY	0.35	YES	0	2	1	0	0	23
516	LUCERNE AVE	LAKE WORTH RD	N E ST	0.24	YES	0	0	2	0	2	24
585	OCEAN DR	RIVER DR	E OCEAN BLVD	0.55	YES	0	0	2	1	1	25

**Pedestrian Segment HIN Top 25 Locations**

HIN Segment GIS ID	Street Name	Start Road Name	End Road Name	Length (mi)	State Road (Yes/No)	Pedestrian Fatal Crashes	Pedestrian Serious Injury Crashes	Pedestrian Non-incapacitating Injury Crashes	Pedestrian Possible Injury Crashes	Pedestrian No Injury Crashes	Final HIN Rank
414	BROADWAY	45TH ST	40TH ST	0.24	YES	2	3	2	2	0	1
698	S DIXIE HWY	6TH AVE S	9TH AVE S	0.25	YES	1	2	2	2	0	2
3204	6TH AVE S	DIXIE HWY	S A ST	0.48	No	1	6	3	2	2	3
516	LUCERNE AVE	LAKE WORTH RD	N E ST	0.24	YES	1	1	0	2	1	4
284	BROADWAY	52ND ST	49TH ST	0.16	YES	1	1	0	1	1	5
750	S MILITARY TRL	CANAL 8 RD	PURDY LN	0.25	YES	3	1	1	0	0	6
499	LAKE AVE	N E ST	DIXIE HWY	0.25	YES	0	2	2	0	0	7
200	N DIXIE HWY	5TH AVE N	2ND AVE N	0.25	YES	2	1	0	0	0	8
233	S DIXIE HWY	SUMMA ST	ALHAMBRA PL	0.15	YES	1	0	2	0	0	9
5950	SEACREST BLVD	OLD SPANISH TRL	MENTONE RD	0.25	No	1	0	1	1	0	10
701	S DIXIE HWY	SOUTH OF 15TH AVE S	E WINDWARD WAY	0.35	YES	1	1	0	0	1	11
743	S MILITARY TRL	HOLIDAY WAY	FOREST HILL BLVD	0.38	YES	2	1	1	1	1	12
6446	W GATEWAY BLVD	N CONGRESS AVE	NW 23RD ST	0.40	No	1	2	1	0	1	13
3102	10TH AVE N	HAVERHILL RD	S 57TH AVE	0.77	No	2	0	3	0	0	14
5386	PALM BEACH LAKES BLVD	N TAMARIND AVE	N AUSTRALIAN AVE	0.30	No	0	2	1	2	0	15
5072	N BENOIST FARMS RD	BELVEDERE RD	OKEECHOBEE BLVD	1.21	No	1	0	2	0	1	16
139	ATLANTIC AVE	SE 7TH AVE	VENETIAN DR	0.26	YES	0	1	0	2	2	17
714	S FEDERAL HWY	GREENBRIAR DR	E WOOLBRIGHT RD	0.44	YES	0	1	3	0	1	18
558	N MILITARY TRL	COMMUNITY DR	OLD MILITARY TRL	0.50	YES	2	1	0	2	0	19
974	LAKE WORTH RD	KIRK RD	WEST OF OLSSON TER	0.19	YES	1	0	1	1	0	20
5193	N SEACREST BLVD	GATEWAY BLVD	MENTONE RD	1.00	No	1	1	1	1	0	20
86	S DIXIE HWY	PARK PL	FLAMINGO DR	0.13	YES	1	0	0	1	0	22
699	S DIXIE HWY	9TH AVE S	12TH AVE S	0.25	YES	1	1	0	0	0	23
73	GLADES RD	SR 7	GLADES RD	0.23	YES	1	0	1	1	0	24
285	BROADWAY	49TH ST	45TH ST	0.20	YES	0	0	1	4	1	25

**Bicycle Segment HIN Top 25 Locations**

HIN Segment GIS ID	Street Name	Start Road Name	End Road Name	Length (mi)	State Road (Yes/No)	Bike Fatal Crashes	Bike Serious Injury Crashes	Bike Non-incapacitating Injury Crashes	Bike Possible Injury Crashes	Bike No Injury Crashes	Final HIN Rank
114	S OCEAN BLVD	E ATLANTIC AVE	CASUARINA RD	0.51	YES	0	1	3	2	3	1
12	OCEAN DR	LARK DR	NORTH OF GOLFVIEW DR	1.00	YES	0	2	4	3	0	2
982	S OCEAN BLVD	CARISSA RD	E LINTON BLVD	0.86	YES	0	2	2	2	0	3
3204	6TH AVE S	DIXIE HWY	S A ST	0.48	No	0	3	3	1	1	4
585	OCEAN DR	RIVER DR	E OCEAN BLVD	0.55	YES	0	0	2	4	0	5
698	S DIXIE HWY	6TH AVE S	9TH AVE S	0.25	YES	0	2	0	0	3	6
5429	PALMETTO PARK RD EB TO BOCA RIO RD SB	W PALMETTO PARK RD	BOCA RIO RD	0.18	No	0	1	2	2	0	7
4025	E CAMINO REAL	S DIXIE HWY	SE 4TH AVE	0.58	No	0	0	3	3	0	8
768	S OCEAN BLVD	E LINTON BLVD	S OCEAN ALY	2.09	YES	0	3	5	1	2	9
516	LUCERNE AVE	LAKE WORTH RD	N E ST	0.24	YES	0	0	2	2	0	10
588	OCEAN DR	GEORGE BUSH BLVD	THOMAS ST	0.68	YES	0	0	3	0	2	11
4667	LAKE IDA RD	N SWINTON AVE	N CONGRESS AVE	1.21	No	0	2	6	1	3	12
498	LAKE AVE	LAKE WORTH RD	N E ST	0.25	YES	0	0	2	0	3	13
727	S MILITARY TRL	SOUTH OF CAMBRIDGE ST	LAKE WORTH RD	0.51	YES	0	2	1	3	4	14
5763	S FLORIDA MANGO RD	BOUNDBROOK BLVD	10TH AVE N	0.67	No	0	1	1	2	0	15
749	S MILITARY TRL	FOREST HILL BLVD	CANAL 8 RD	0.25	YES	1	0	1	1	1	16
717	S FEDERAL HWY	SOUTH OF SE 18TH AVE	SE 23RD AVE	0.25	YES	0	0	2	2	1	17
866	W ATLANTIC AVE	NW 24TH AVE	N CONGRESS AVE	0.29	YES	0	2	1	0	2	18
517	LUCERNE AVE	N E ST	DIXIE HWY	0.24	YES	0	1	0	2	0	19
634	OKEECHOBEE BLVD	EAST OF N HAVERHILL RD	N MILITARY TRL	0.26	YES	0	1	4	0	2	20
14	INDIANTOWN RD	S PENNOCK LN	MILITARY TRL	0.51	YES	0	1	4	2	1	21
743	S MILITARY TRL	HOLIDAY WAY	FOREST HILL BLVD	0.38	YES	0	1	4	1	0	22
886	BOYNTON BEACH BLVD	NW 3RD ST	N SEASCREST BLVD	0.27	YES	0	0	2	2	1	23
772	S OCEAN BLVD	LAKE AVE	NORTH OF E OCEAN AVE	1.08	YES	0	2	1	1	0	24
770	S OCEAN BLVD	E OCEAN AVE	NORTH OF BOYNTON INLET PIER PARKING	2.23	YES	0	1	1	3	2	25

# TOP 10 HIGH-INJURY NETWORK LOCATIONS FOR PALM BEACH COUNTY COMMISSION DISTRICTS

The High-Injury Network (HIN) identifies roadway segments and intersections in Palm Beach County where the most severe crashes occur. It highlights locations with a disproportionate number of fatal and serious injury (FSI) crashes, as well as corridors with a high concentration of pedestrian or bicycle crashes, regardless of severity. The analysis covers all State and County-maintained public roads, excluding limited access highways, within Palm Beach County.

Separate HINs were developed for motor vehicle, pedestrian, bicycle, and motorcycle crashes, considering both segments and intersections. The full methodology for the HIN development can be found in the Methodology Technical Memorandum.

This appendix summarizes the top 10 HIN segments and signalized intersections for each Palm Beach County Commission District. For each district, maps of the top 10 HIN segments and intersections are presented by mode, followed by tables detailing the corresponding locations.

## DISTRICT 1

The top 10 vehicle HIN locations are primarily concentrated along Northlake Blvd, followed by W Indiantown Road (SR 706). The intersection of PGA Blvd and N Military Trail ranked 16 in the countywide vehicle HIN.

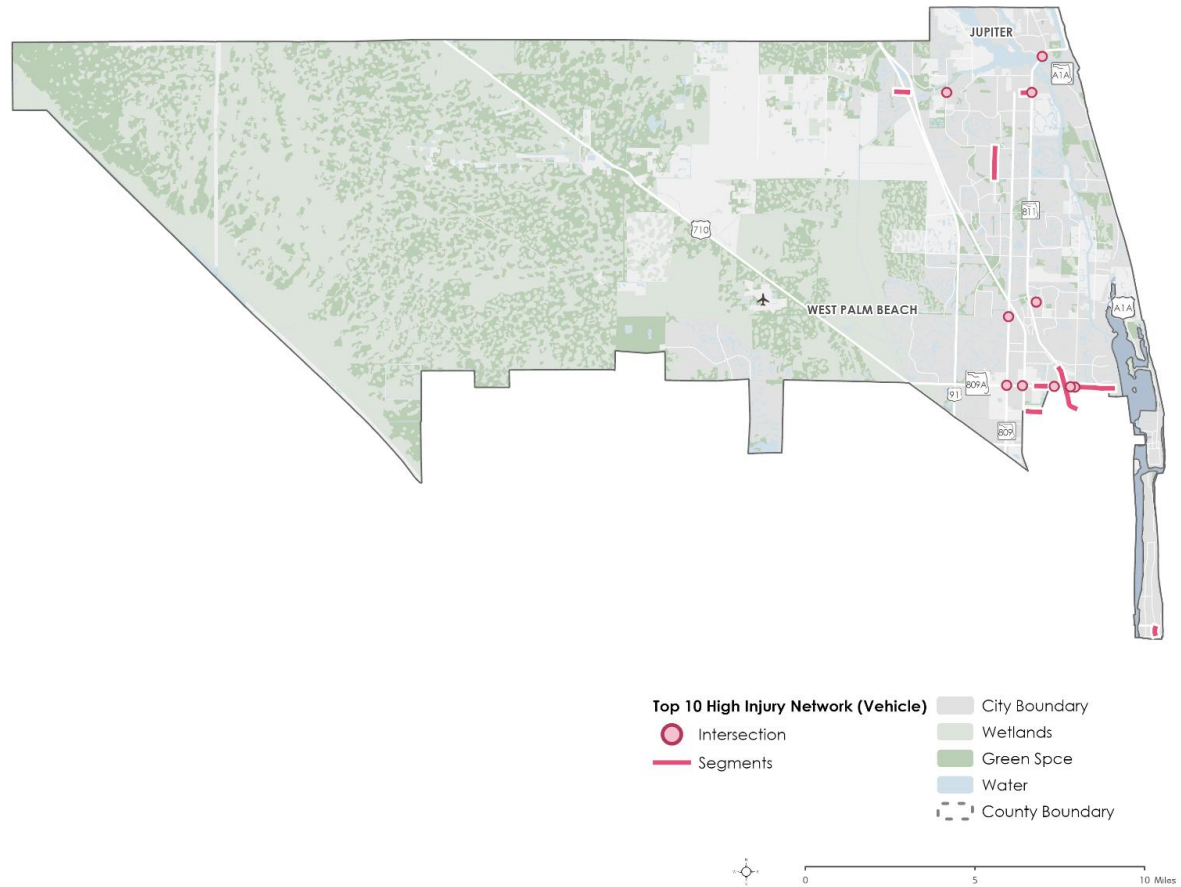


Figure 1 Top 10 Segments and Intersections on Vehicle HIN in District 1

**Table 1: Summary of Top 10 Segments on Vehicle HIN in District 1**

HIN Segment ID	Street Name	Start Road Name	End Road Name	Length (mi)
38	Northlake Blvd	Silverthorne Dr	Macarthur Blvd	0.26
603	Northlake Blvd	Southwind Dr	US 1	0.55
604	Northlake Blvd	Prosperity Farms Rd	Southwind Dr	0.55
914	Indiantown Rd	S Hepburn Ave	Old Dixie Hwy	0.25
917	Indiantown Rd	SR 91	I-95 (On Ramp)	0.17
918	Indiantown Rd	Marsala Ct	SR 91	0.16
1054	County Rd	Brazilian Ave	Chilean Ave	0.16
4522	Investment Ln	Resource Rd	Garden Rd	0.34
5306	Old Dixie Hwy	95 <sup>th</sup> Ct	Railroad Ave	1.31
5727	S Central Blvd	Indian Creek Pkwy	Fredrick Small Rd	0.87

**Table 2: Summary of Top 10 Intersections on Vehicle HIN in District 1**

HIN Intersection ID	East/West Street Name	North/South Street Name
405	Northlake Blvd	Prosperity Farms Rd
406	Northlake Blvd	Alt A1A/10 <sup>th</sup> St/FEC R/R
408	Northlake Blvd	I-95 (On Ramp)
410	Northlake Blvd	Military Tr
423	PGA Blvd	Military Tr
433	PGA Blvd	Ellison Wilson Rd
458	Indiantown Rd	Alt A1A
463	Indiantown Rd	Central Blvd
468	Riverside Dr E	Alt A1A/Old Dixie Hwy
565	Northlake Blvd	Congress Ave

The top 10 motorcycle HIN locations are primarily concentrated along Northlake Blvd, followed by Old Dixie Hwy (SR 811) north of E Indiantown Road. The intersection of Ellison Wilson Road and PGA Blvd ranked 10 in the countywide motorcycle HIN.

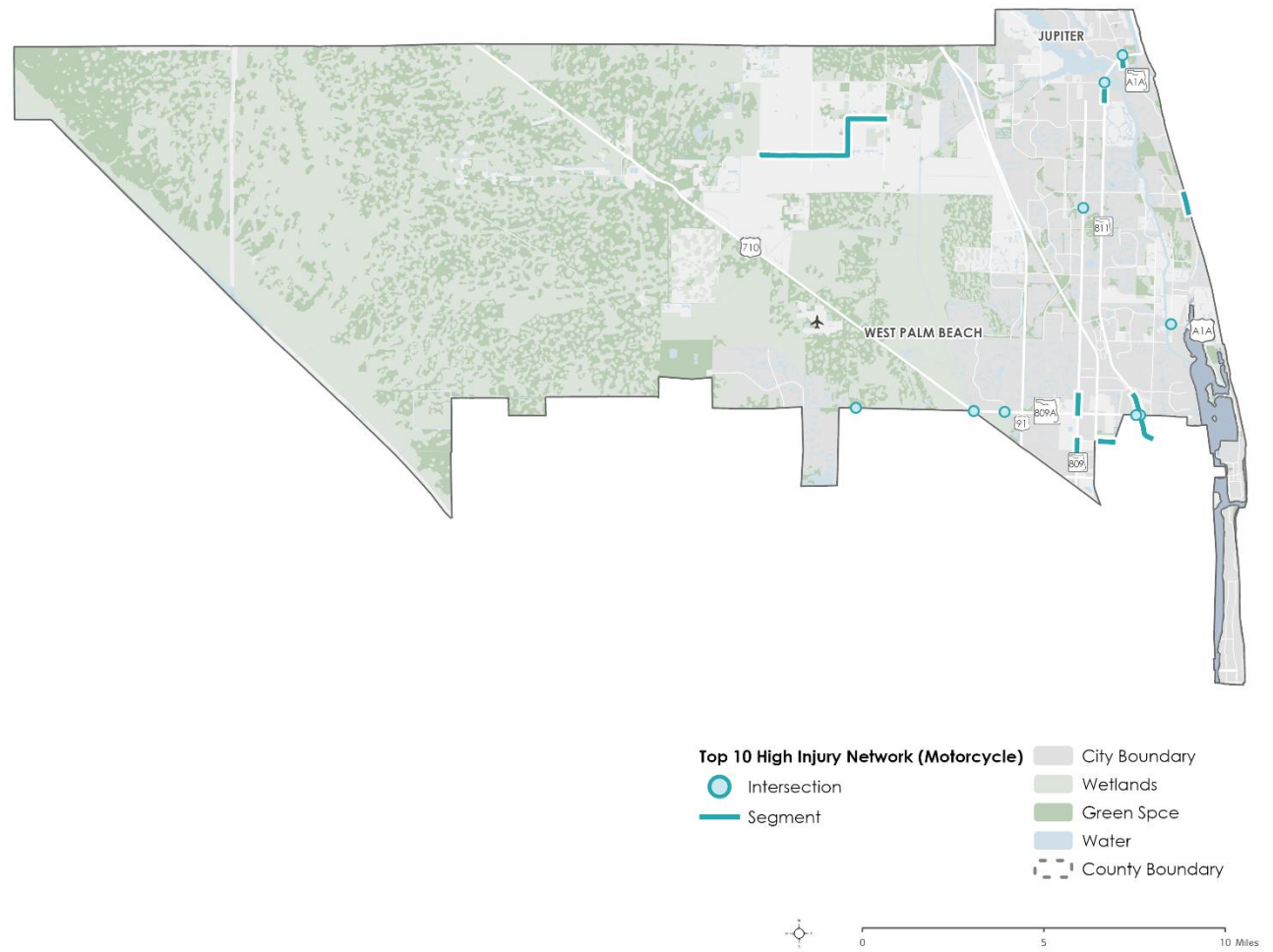


Figure 2 Top 10 Segments and Intersections on Motorcycle HIN in District 1

**Table 3: Summary of Top 10 Segments on Motorcycle HIN in District 1**

<b>HIN Segment ID</b>	<b>Street Name</b>	<b>Start Road Name</b>	<b>End Road Name</b>	<b>Length (mi)</b>
286	N Military Trl	Investment Ln	Leo Ln	0.40
576	N Military Trl	Crestdale St	Northlake Blvd	0.50
650	Old Dixie Hwy	Old Jupiter Dr	E Indian Town Rd	0.25
959	Ocean Dr	Marcinski Rd	Donald Ross Rd	0.51
968	Us Highway 1	Beach Rd	N US Hwy 1 (Bridge)	0.29
4522	Investment Ln	Resource Rd	Garden Rd	0.34
5306	Old Dixie Hwy	95 <sup>th</sup> Ct	Railroad Ave	1.31
5606	Randolph Siding Rd	134 <sup>th</sup> Ter N	Jupiter Farms Rd	4.40

**Table 4: Summary of Top 10 Intersections on Motorcycle HIN in District 1**

<b>HIN Intersection ID</b>	<b>East/West Street Name</b>	<b>North/South Street Name</b>
411	Northlake Blvd	Beeline Hwy
432	PGA Blvd	Ellison Wilson Blvd
466	Center St	Alt A1A/Old Dixie Hwy
469	Beach Rd Alt/A1A/CR 707	US 1/SR 5
549	Northlake Blvd	Old Dixie Hwy
581	Northlake Blvd	Mt Holly Dr
585	University Dr	Military Tr
601	Northlake Blvd	Ryder Cup Blvd
1703	Northlake Blvd	Ibis Blvd

District contains only four pedestrian HIN segments and four intersections. They are sparsely distributed, and none of them rank among the top 10 HIN locations in the countywide.

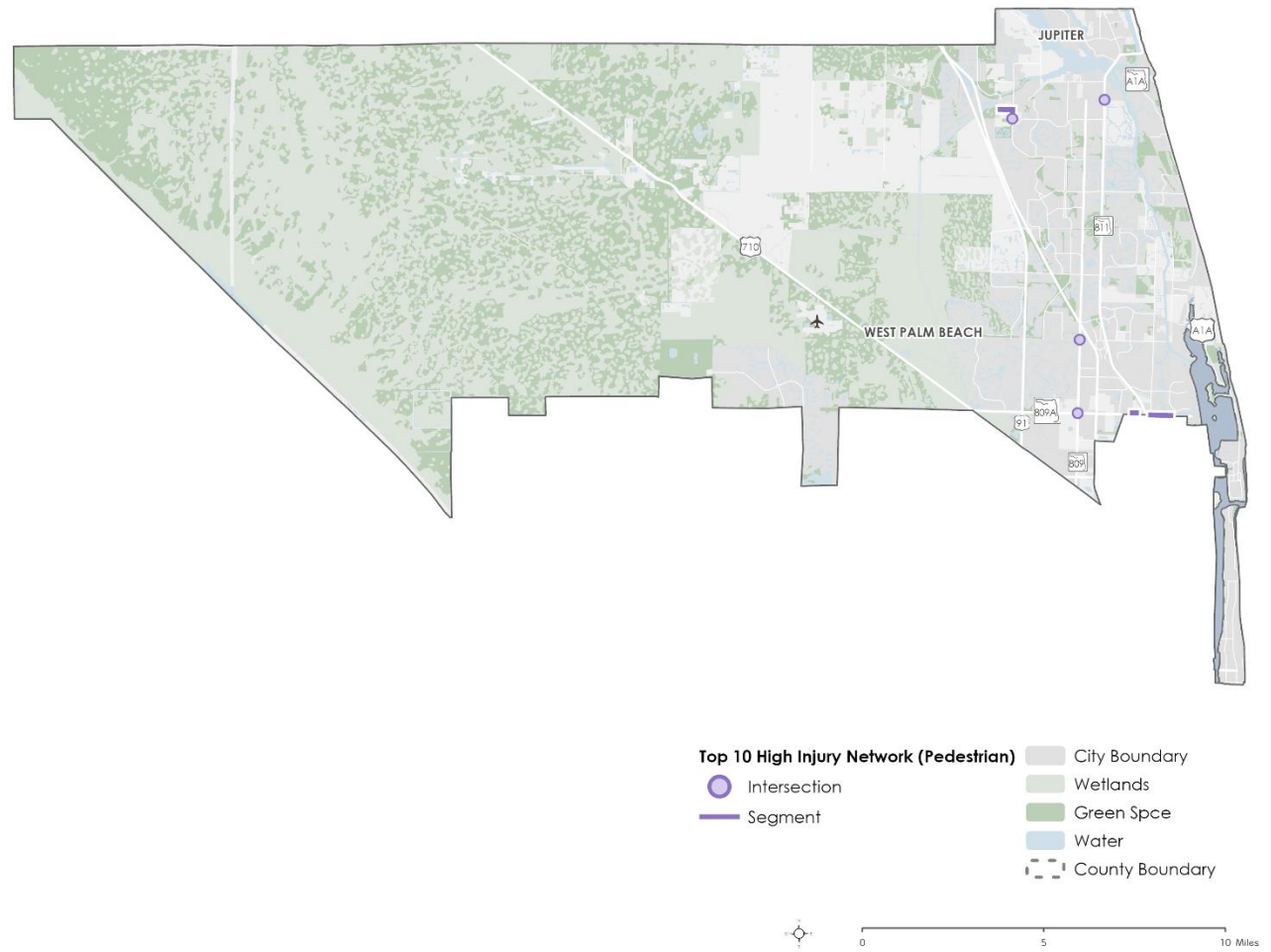


Figure 3 Top 10 Segments and Intersections on Pedestrian HIN in District 1

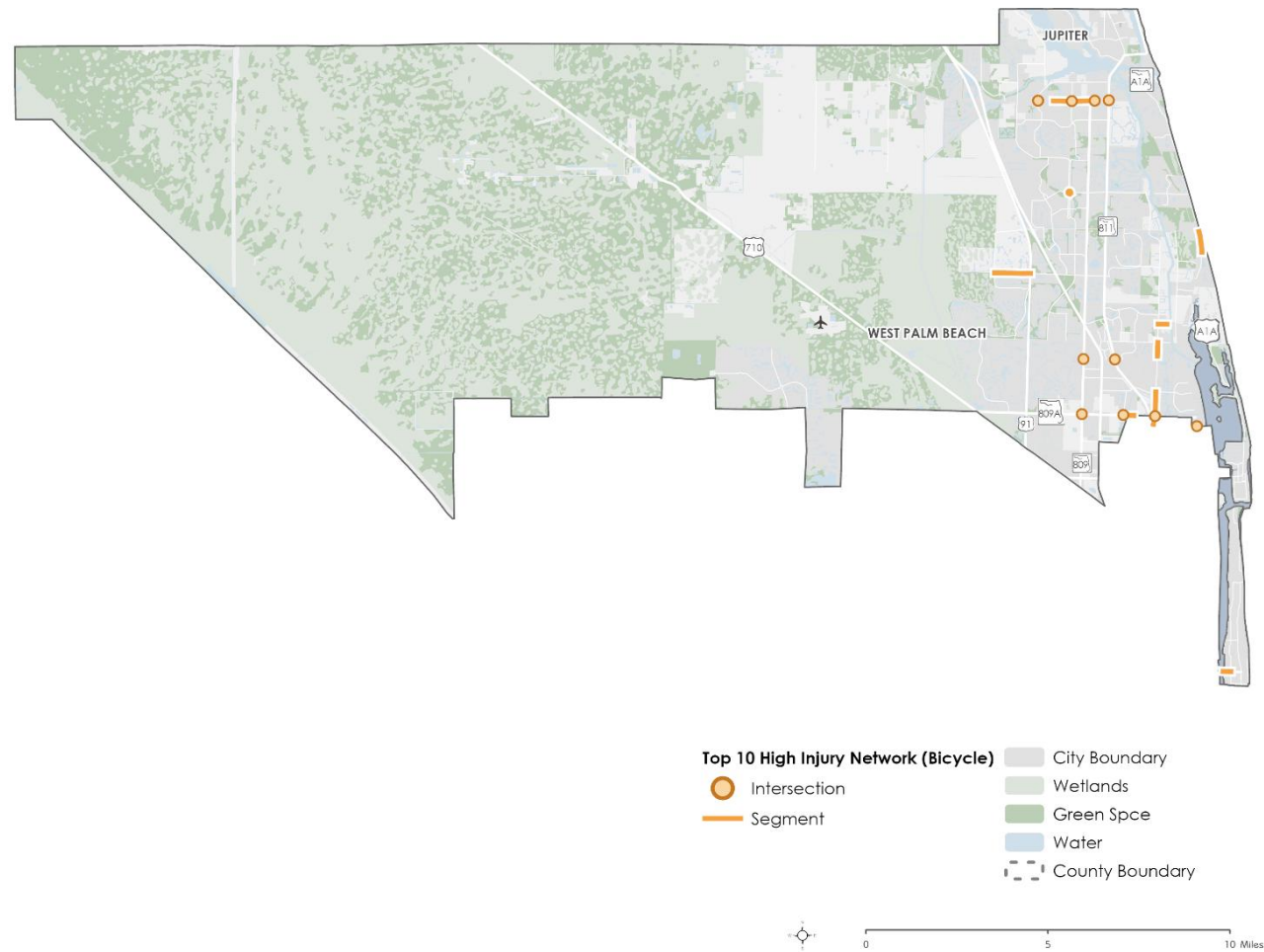
**Table 5: Summary of Top 10 Segments on Pedestrian HIN in District 1**

<b>HIN Segment ID</b>	<b>Street Name</b>	<b>Start Road Name</b>	<b>End Road Name</b>	<b>Length (mi)</b>
604	Northlake Blvd	Prosperity Farms Rd	Southwind Dr	0.55
4578	Jupiter Gardens Blvd	Roosevelt Rd	Central Blvd	0.34
4890	Mango Ln	High Point Dr	Mt Holly Dr	0.12
5721	S Central Blvd	Jupiter Gardens Blvd	Jupiter Park Dr	0.25

**Table 6: Summary of Top 10 Intersections on Pedestrian HIN in District 1**

<b>HIN Intersection ID</b>	<b>East/West Street Name</b>	<b>North/South Street Name</b>
410	Northlake Blvd	Military Tr
423	PGA Blvd	Military Tr
458	Indiantown Rd	Alt A1A
1978	Jupiter Park Dr	Central Blvd

The top 10 bicycle HIN locations are primarily concentrated along W Indiantown Road (SR 706), Northlake Blvd (SR 809) and Prosperity Farms Road. The intersection of W Indiantown Road and Loxahatchee Dr ranked 4 in the countywide bicycle HIN.



**Figure 4 Top 10 Segments and Intersections on Bicycle HIN in District 1**

**Table 7: Summary of Top 10 Segments on Bicycle HIN in District 1**

HIN Segment ID	Street Name	Start Road Name	End Road Name	Length (mi)
14	Indiantown Rd	S Pennock Ln	Military Tr	0.51
17	Indiantown Rd	N Delaware Blvd	Melaleuca Ln	0.29
39	Northlake Blvd	Macarthur Blvd	Shad berry St	0.29
621	Ocean Dr	Donald Ross Rd	Diana Ln	0.57
667	PGA Blvd	Prosperity Farms Rd	Barnard Dr	0.24
683	Royal Palm Way	S Lake Trl	Cocoanut Row	0.22
4455	Hood Rd	Jog Rd	US Hwy 91	0.98
5567	Prosperity Farms Rd	Lighthouse Dr	10 <sup>th</sup> St	0.89
5574	Prosperity Farms Rd	Monet Rd	Harbor Isles Dr	0.38
5716	S Central Blvd	W Fredrick Rd	Central Blvd	0.23

**Table 8: Summary of Top 10 Intersections on Bicycle HIN in District 1**

HIN Intersection ID	East/West Street Name	North/South Street Name
55	Indiantown Rd	Pennock LA
56	Indiantown Rd	Loxahatchee Dr
402	Palmetto Rd/Lake Shore Dr	US Hwy 1
405	Northlake Blvd	Prosperity Farms Rd
410	Northlake Blvd	Military Tr
420	Burns Rd	Alt A1A
421	Burns Rd	Military Tr
458	Indiantown Rd	Alt A1A
459	Indiantown Rd	Maplewood Dr
580	Northlake Blvd	Macarthur Blvd

## DISTRICT 2

The top 10 vehicle HIN locations are primarily concentrated along N Military Trail (SR 809), Okeechobee Blvd (SR 704) and Dixie Hwy (SR 811). Among the district's top 10 lists, four intersections and three segments also appear in the countywide top 10 vehicle HIN.

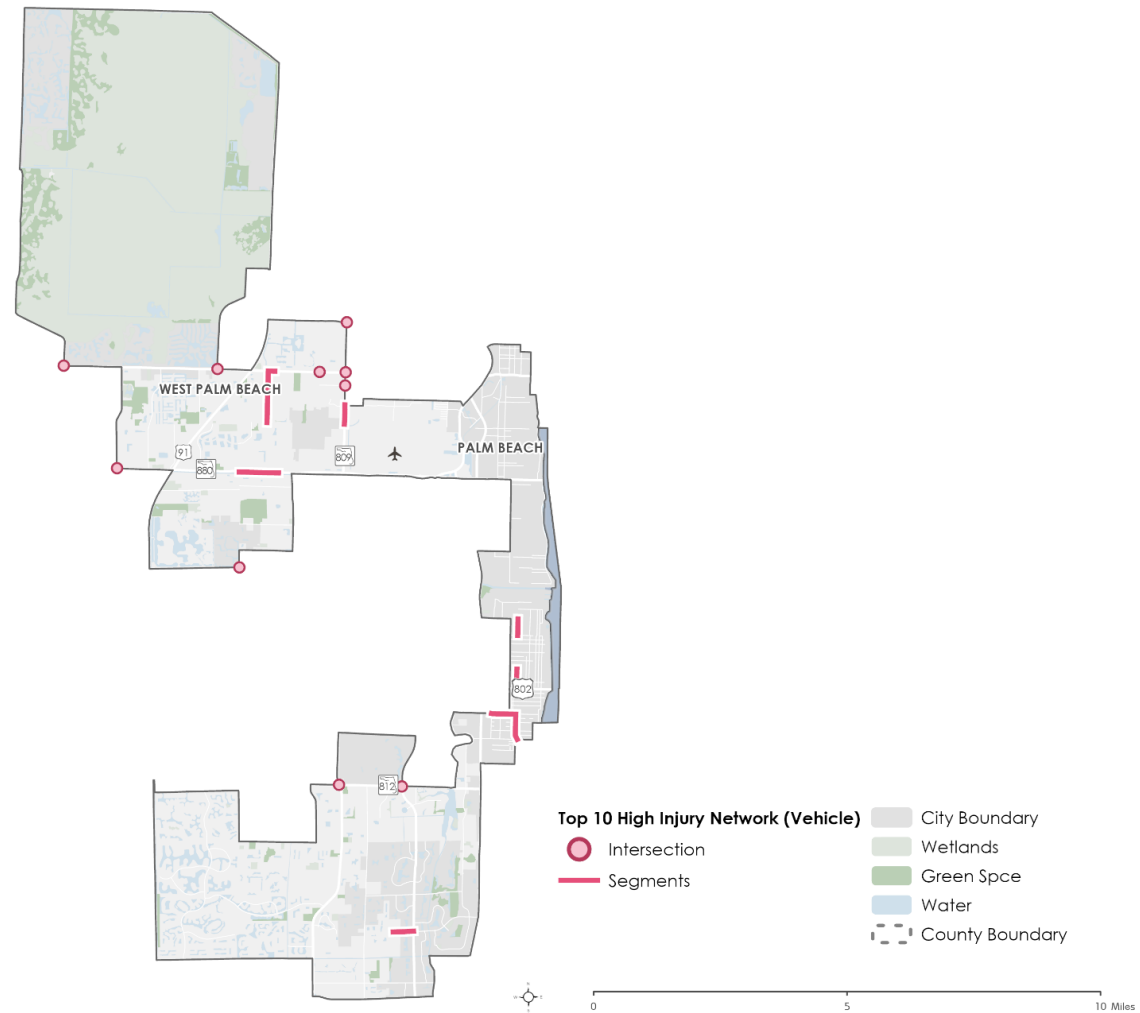


Figure 5 Top 10 Segments and Intersections on Vehicle HIN in District 2

**Table 9: Summary of Top 10 Segments on Vehicle HIN in District 2**

HIN Segment ID	Street Name	Start Road Name	End Road Name	Length (mi)
200	N Dixie Hwy	5 <sup>th</sup> Ave N	2 <sup>nd</sup> Ave N	0.25
222	Okeechobee Blvd	Drexel Rd	Meridian Rd	0.13
260	S Dixie Hwy	17 <sup>th</sup> Ave N	13 <sup>th</sup> Ave N	0.32
549	N Military Trl	Cherry Rd	Belvedere Rd	0.38
698	S Dixie Hwy	6 <sup>th</sup> Ave S	9 <sup>th</sup> Ave S	0.25
699	S Dixie Hwy	9 <sup>th</sup> Ave S	12 <sup>th</sup> Ave S	0.25
815	Southern Blvd	S Jog Rd	Avocado Ave	0.77
3204	6th Ave S	S A St	S Dixie Hwy	0.48
3999	Drexel Rd	Okeechobee Rd	Belvedere Rd	1.02
6446	W Gateway Blvd	NW 23 <sup>rd</sup> St	N Congress Ave	0.40

**Table 10: Summary of Top 10 Intersections on Vehicle HIN in District 2**

HIN Intersection ID	East/West Street Name	North/South Street Name
200	Lantana Rd	Congress Ave
263	Forest Hill Blvd	Jog Rd
302	Southern Blvd	Sansbury Way
321	Westgate Ave/Elmhurst Rd	Military Tr
341	Okeechobee Blvd	Military Tr
342	Okeechobee Blvd	Haverhill Rd
347	Okeechobee Blvd	Jog Rd
353	Okeechobee Blvd	SR 7/US 441
357	Community Dr	Military Tr
591	Lantana Rd	Military Tr

A similar geographic distribution pattern was observed for the top 10 motorcycle HIN. Among the district's top 10 lists, three intersections and four segments also appear in the countywide top 10 motorcycle HIN.

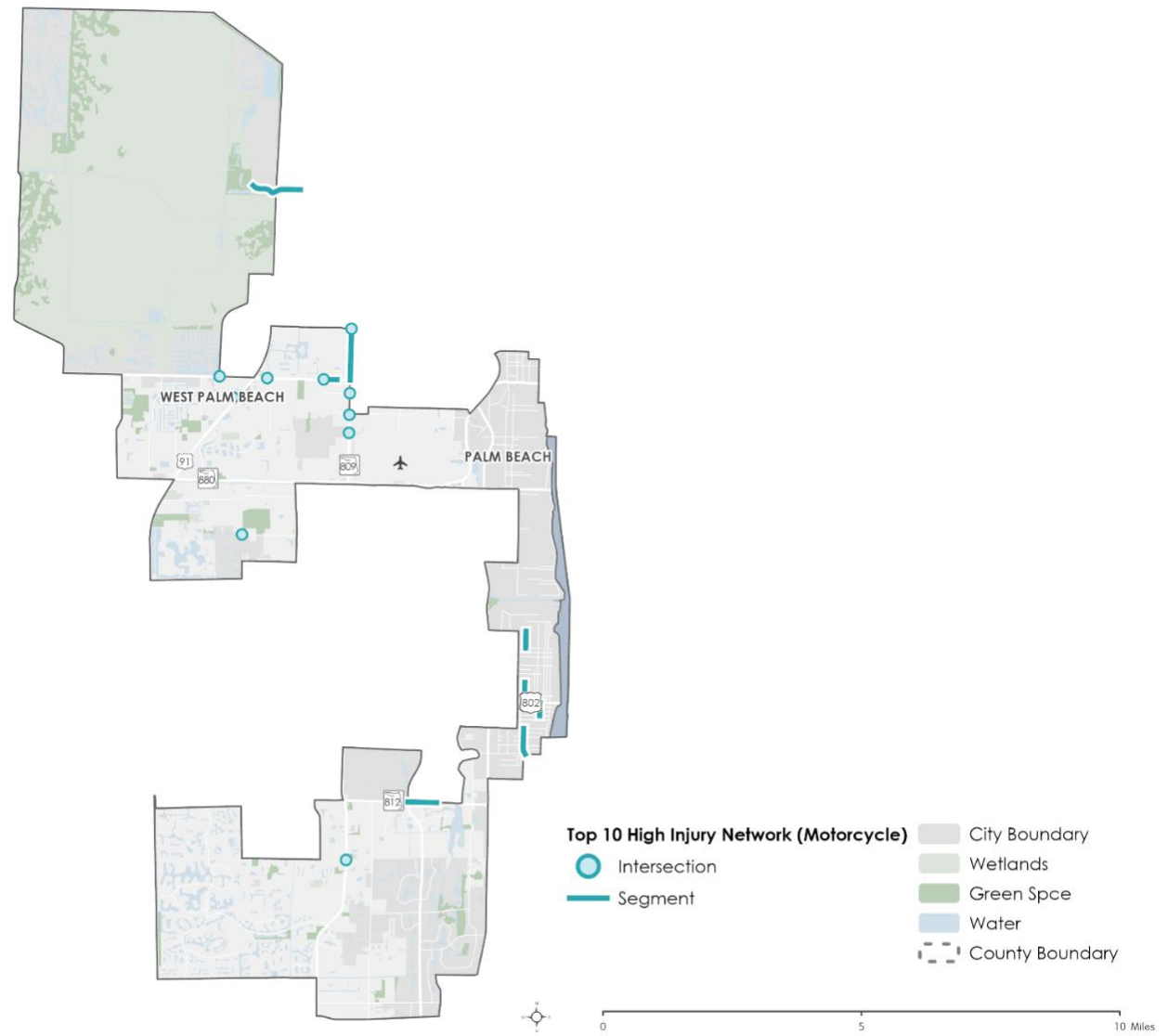


Figure 6 Top 10 Segments and Intersections on Motorcycle HIN in District 2

**Table 11: Summary of Top 10 Segments on Motorcycle HIN in District 2**

HIN Segment ID	Street Name	Start Road Name	End Road Name	Length (mi)
200	N Dixie Hwy	5 <sup>th</sup> Ave N	2 <sup>nd</sup> Ave N	0.25
260	S Dixie Hwy	17 <sup>th</sup> Ave N	13 <sup>th</sup> Ave N	0.32
557	N Military Trl	Old Military Trl	Okeechobee Rd	0.50
558	N Military Trl	Community Dr	Old Military Trl	0.50
635	Okeechobee Blvd	N Haverhill Rd	Sharon Rd	0.26
698	S Dixie Hwy	6 <sup>th</sup> Ave S	9 <sup>th</sup> Ave S	0.25
699	S Dixie Hwy	9 <sup>th</sup> Ave S	12 <sup>th</sup> Ave S	0.25
708	S Federal Hwy	Lake Ave	3 <sup>rd</sup> Ave S	0.25
928	Lantana Rd	S Congress Ave	Via Vermilya	0.55
3165	45th St	N Jog Rd	Premier Park Dr	0.97

**Table 12: Summary of Top 10 Intersections on Motorcycle HIN in District 2**

HIN Intersection ID	East/West Street Name	North/South Street Name
316	Belvedere Blvd	Military Tr
318	Cherry Rd	Military Tr
321	Westgate Ave/Elmhurst Rd	Military Tr
342	Okeechobee Blvd	Haverhill Rd
344	Okeechobee Blvd	FLA Turnpike
347	Okeechobee Blvd	Jog Rd
357	Community Dr	Military Tr
535	Hypoluxo Rd	Military Tr
1654	Summit Blvd	Jog Rd
1807	FLA Turnpike	Jog Rd

The top 10 pedestrian HIN locations are primarily concentrated along Okeechobee Blvd (SR 704), and Dixie Hwy (SR 811). Similarly, the district's top-ranked locations also rank highly in the countywide list, five intersections and two segments in the countywide top 10 pedestrian HIN.

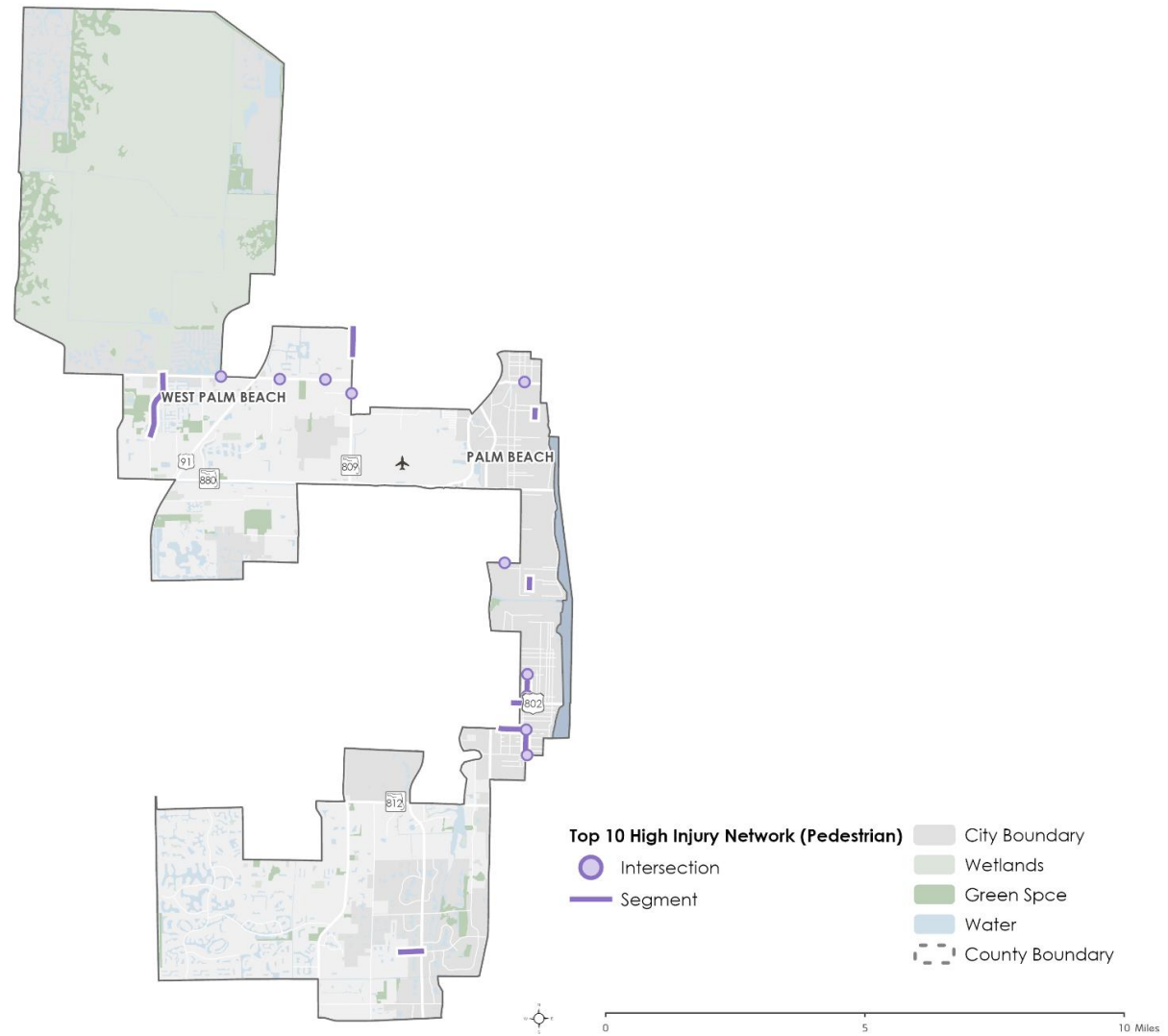


Figure 7 Top 10 Segments and Intersections on Pedestrian HIN in District 2

**Table 13: Summary of Top 10 Segments on Pedestrian HIN in District 2**

HIN Segment ID	Street Name	Start Road Name	End Road Name	Length (mi)
86	S Dixie Hwy	Park Pl	Flamingo Dr	0.13
200	N Dixie Hwy	5 <sup>th</sup> Ave N	2 <sup>nd</sup> Ave N	0.25
233	S Dixie Hwy	Summa St	Alhambra Pl	0.15
499	Lake Ave	S E St	S Dixie Hwy	0.25
558	N Military Trl	Community Dr	Old Military Trl	0.50
698	S Dixie Hwy	6 <sup>th</sup> Ave S	9 <sup>th</sup> Ave S	0.25
699	S Dixie Hwy	9 <sup>th</sup> Ave S	12 <sup>th</sup> Ave S	0.25
3204	6th Ave S	S A St	S Dixie Hwy	0.48
5072	N Benoist Farms Rd	Okeechobee Rd	Belvedere Rd	1.21
6446	W Gateway Blvd	NW 23 <sup>rd</sup> St	S Congress Ave	0.40

**Table 14: Summary of Top 10 Intersections on Pedestrian HIN in District 2**

HIN Intersection ID	East/West Street Name	North/South Street Name
203	12 <sup>th</sup> Ave S	Dixie Hwy
206	6 <sup>th</sup> Ave S	Dixie Hwy
229	2 <sup>nd</sup> Ave N	Dixie Hwy
239	7 <sup>th</sup> Ave N	Congress Ave
274	Forest Hill Blvd	Parker Ave
321	Westgate Ave/Elmhurst Rd	Military Tr
329	Okeechobee Blvd	Rosemary Ave
342	Okeechobee Blvd	Haverhill Rd
343	Okeechobee Blvd	Meridian Rd
347	Okeechobee Blvd	Jog Rd

The top 10 bicycle HIN locations are primarily concentrated along Okeechobee Blvd (SR 704), and the one-way pair of Lake Ave and Lucerne Ave. Among the district's top 10 lists, four intersections and two segments also appear in the countywide top 10 bicycle HIN.

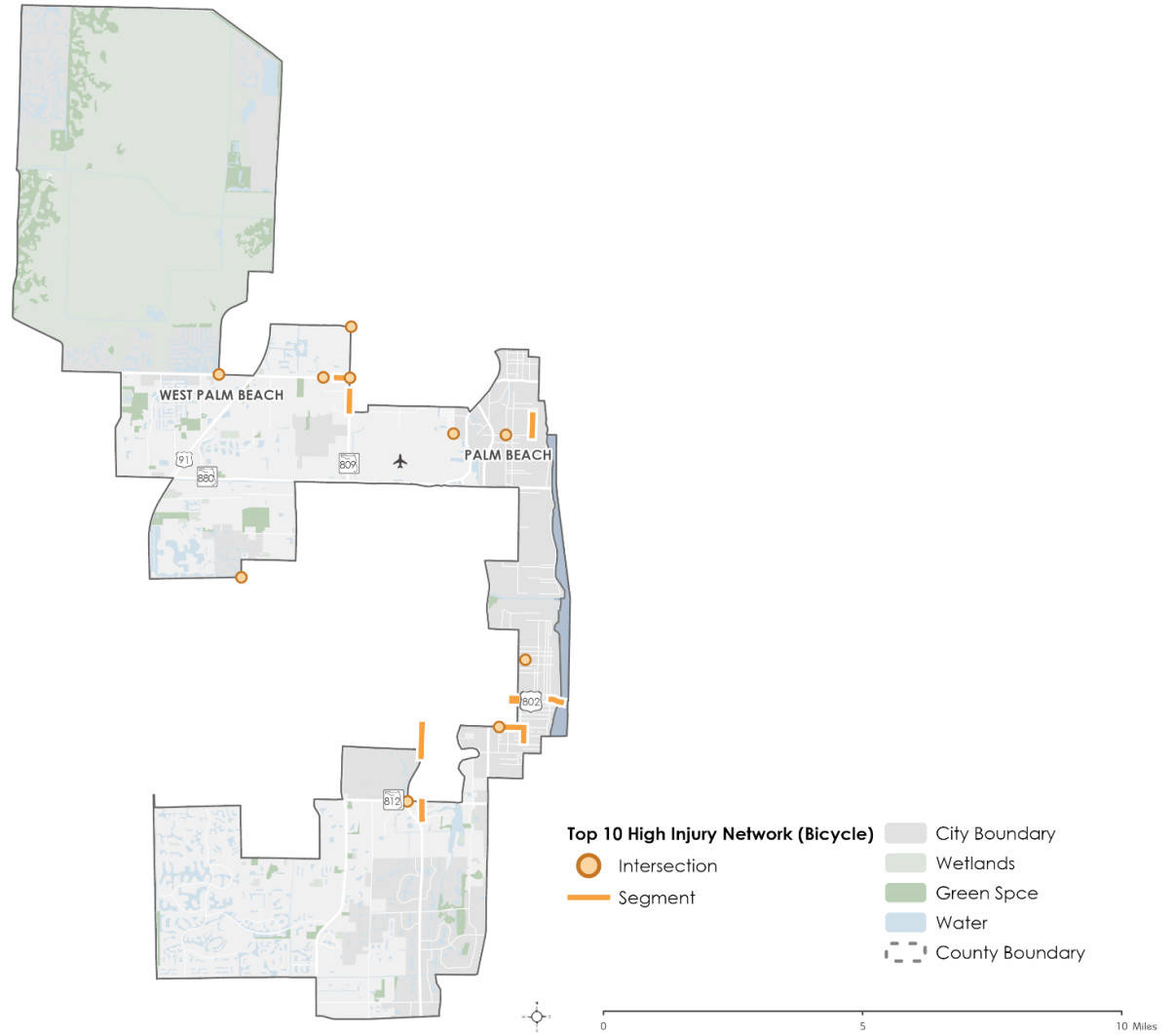


Figure 8 Top 10 Segments and Intersections on Bicycle HIN in District 2

**Table 15: Summary of Top 10 Segments on Bicycle HIN in District 2**

HIN Segment ID	Street Name	Start Road Name	End Road Name	Length (mi)
87	S Dixie Hwy	Flamingo Dr	Belvedere Rd	0.40
499	Lake Ave	S E St	S Dixie Hwy	0.25
517	Lucerne Ave	S E St	N Dixie Hwy	0.24
519	Lucerne Ave	N Lakeside Dr	Lake Ave	0.21
550	N Military Trl	Elmhurst Rd	Cherry Rd	0.38
634	Okeechobee Blvd	Sharon Rd	N Military Tr	0.26
698	S Dixie Hwy	6 <sup>th</sup> Ave S	9 <sup>th</sup> Ave S	0.25
3204	6th Ave S	S A St	S Dixie Hwy	0.48
5303	Old Congress Rd	Lantana Rd	Donnell Dr	0.34
5735	S Congress Ave	Melaleuca Ln	John F Kennedy Dr	0.62

**Table 16: Summary of Top 10 Intersections on Bicycle HIN in District 2**

HIN Intersection ID	East/West Street Name	North/South Street Name
200	Lantana Rd	Congress Ave
241	10th Ave N	Dixie Hwy
263	Forest Hill Blvd	Jog Rd
341	Okeechobee Blvd	Military Tr
342	Okeechobee Blvd	Haverhill Rd
347	Okeechobee Blvd	Jog Rd
357	Community Dr	Military Tr
1630	Belvedere Rd	Fla Mango Rd
1893	Belvedere Rd	Parker Ave
1940	6th Ave S	A St

## DISTRICT 3

Three of the five High Crash Priority Corridors are in District 3: Jog Rd, 10th Ave N, Lake Worth Road (SR 802). The district's top 10 locations are concentrated along with them.

The top 10 vehicle HIN locations are primarily concentrated along 10th Ave N, S Military Trail (SR 809) and S Jog Road. Among the district's top 10 lists, three intersections and five segments also appear in the countywide top 10 vehicle HIN.

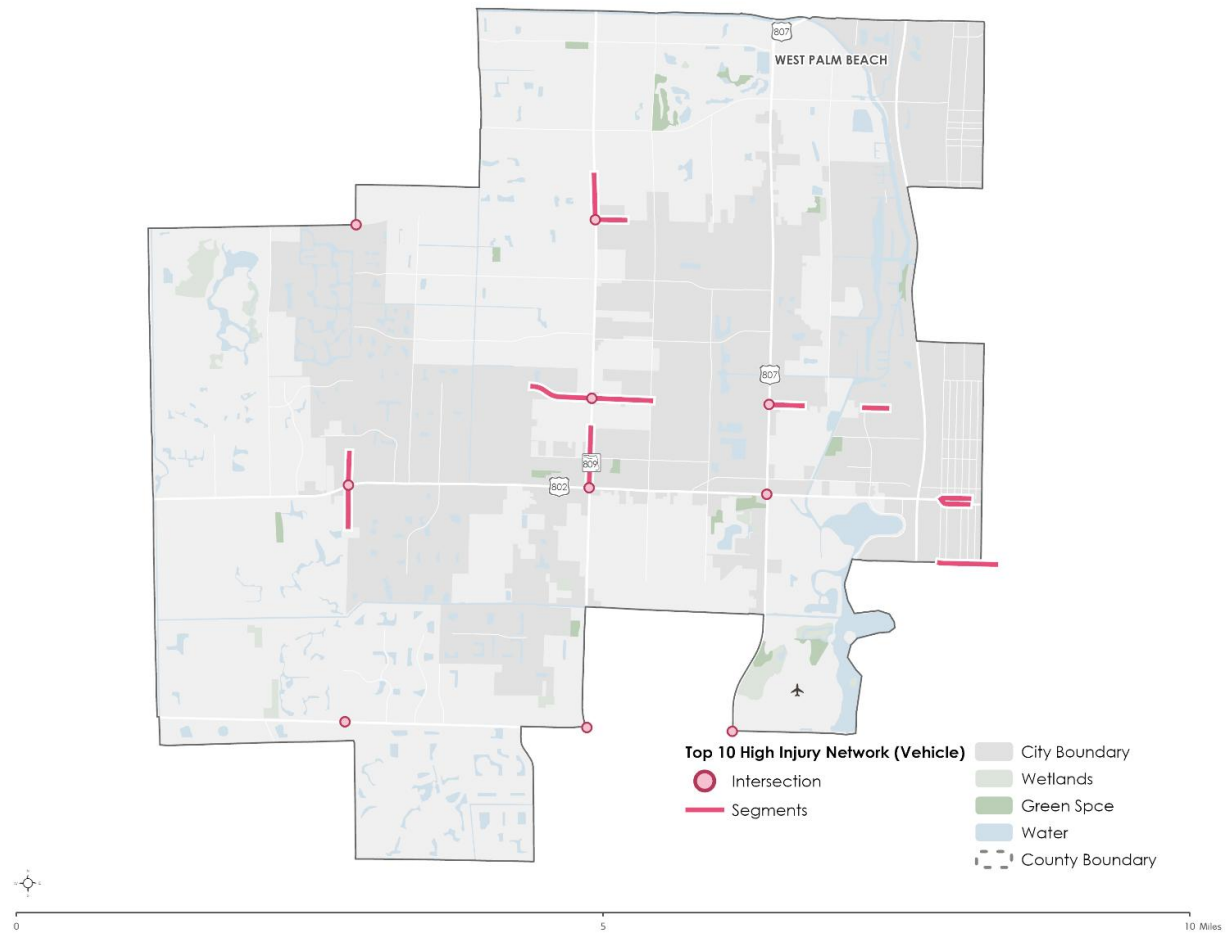


Figure 9 Top 10 Segments and Intersections on Vehicle HIN in District 3

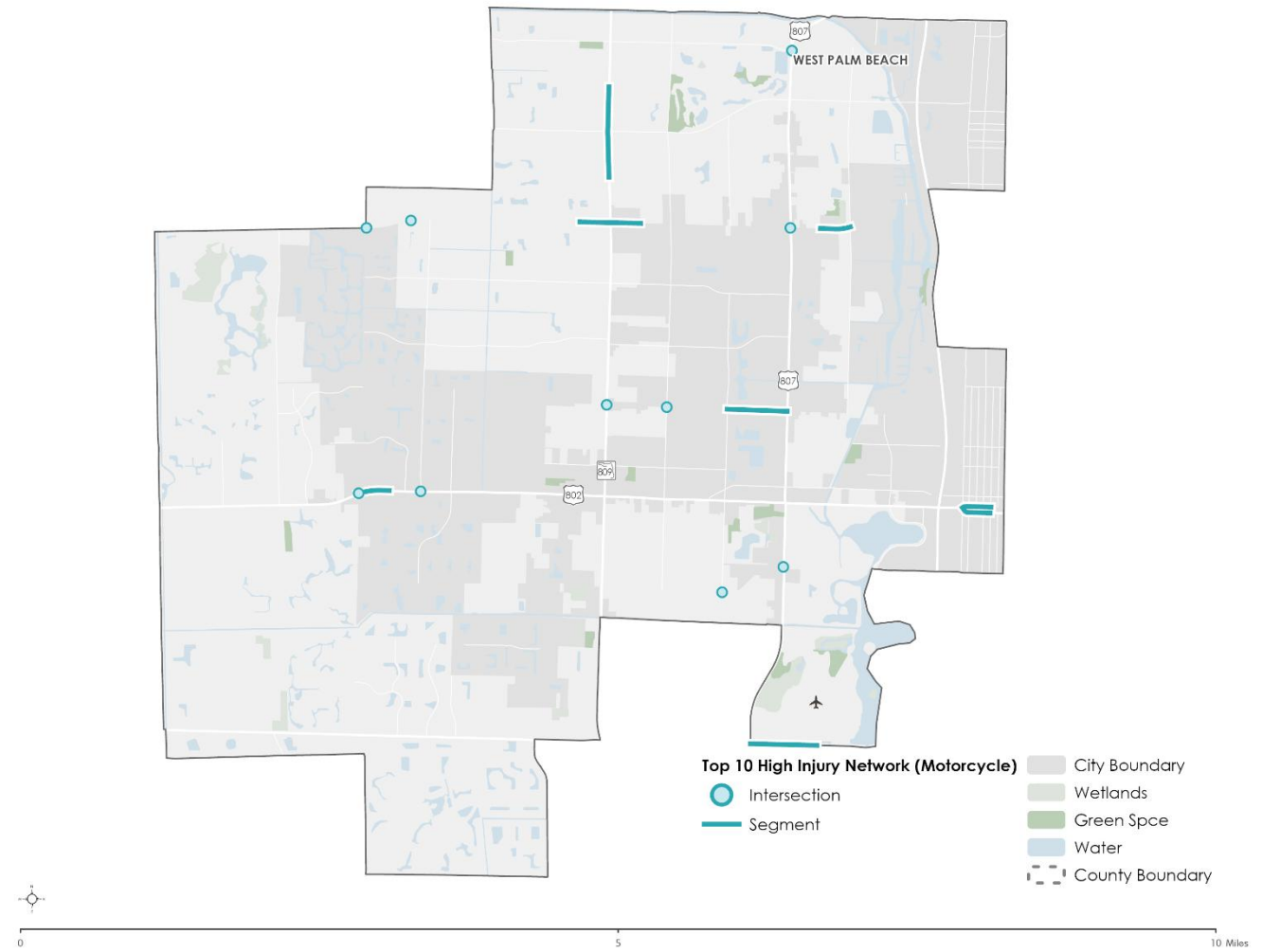
**Table 17: Summary of Top 10 Segments on Vehicle HIN in District 3**

HIN Segment ID	Street Name	Start Road Name	End Road Name	Length (mi)
471	Forest Hill Blvd	S Military Tr	Forest Ave	0.25
498	Lake Ave	S A St	N E St	0.25
516	Lucerne Ave	S A St	N E St	0.24
727	S Military Trl	Springfield St	S Congress Ave	0.51
743	S Military Trl	Holiday Way	Forest Hill Blvd	0.38
3095	10th Ave N	Boutwell Rd	N Detroit St	0.19
3101	10th Ave N	Haverhill Rd	Kirk Rd	1.03
3105	10th Ave N	S Congress Ave	Rudolph Rd	0.28
3204	6th Ave S	S A St	S Dixie Hwy	0.48
5831	S Jog Rd	Dodd Rd	Pine Ave	0.63

**Table 18: Summary of Top 10 Intersections on Vehicle HIN in District 3**

HIN Intersection ID	East/West Street Name	North/South Street Name
24	10th Ave N	Military Tr
200	Lantana Rd	Congress Ave
221	Lake Worth Rd	Congress Ave
231	Lake Worth Rd	Military Tr
234	Lake Worth Rd	Jog Rd
243	10th Ave N	Congress Ave
263	Forest Hill Blvd	Jog Rd
265	Forest Hill Blvd	Military Tr
591	Lantana Rd	Military Tr
1758	Lantana Rd	Jog Rd

The top 10 motorcycle HIN locations are primarily concentrated along 10th Ave N, S Military Trail (SR 809) and Forest Hill Blvd (SR 882). Among the district's top 10 lists, three intersections and three segments also appear in the countywide top 10 motorcycle HIN.



**Figure 10 Top 10 Segments and Intersections on Motorcycle HIN in District 3**

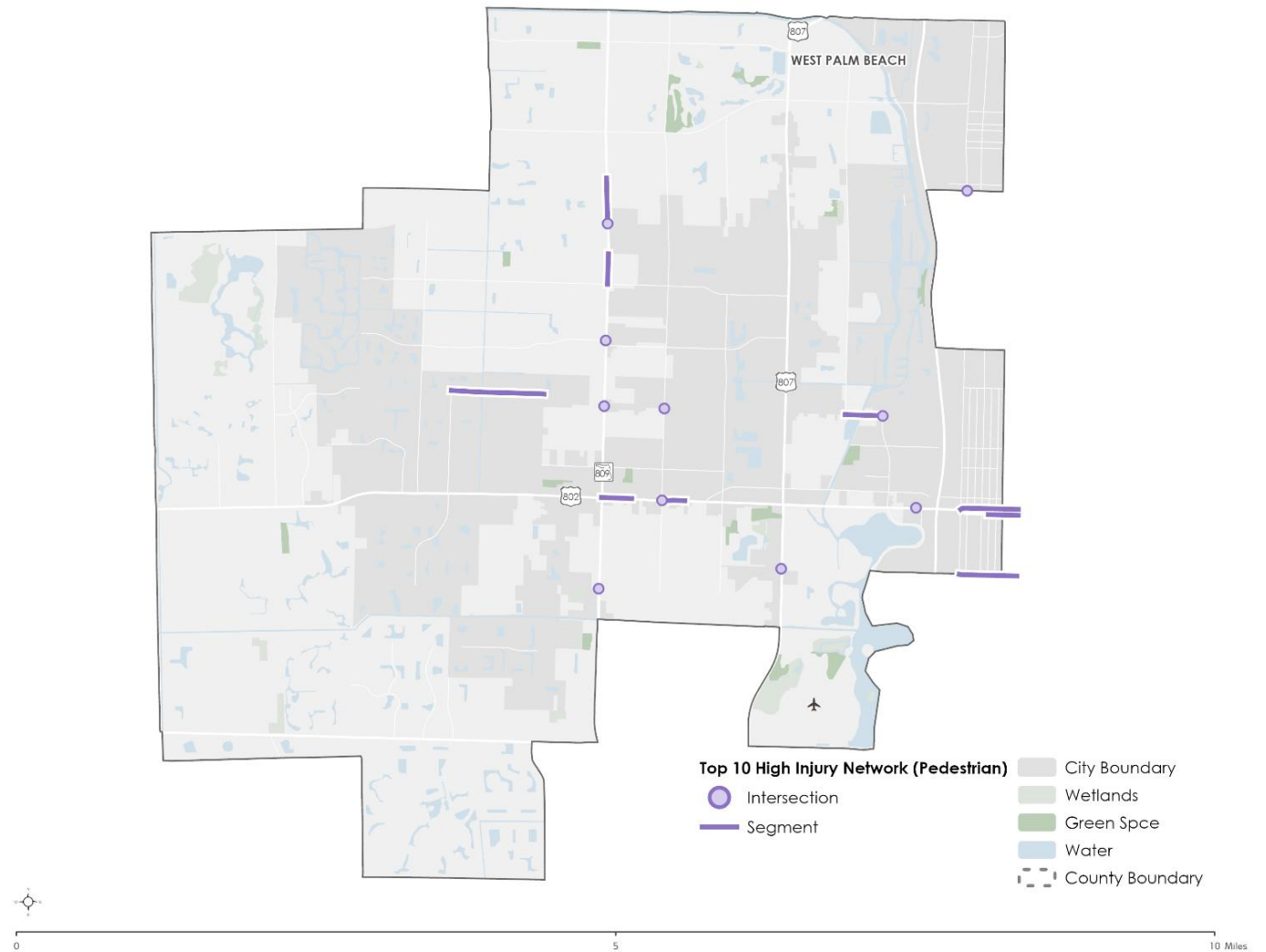
**Table 19: Summary of Top 10 Segments on Motorcycle HIN in District 3**

HIN Segment ID	Street Name	Start Road Name	End Road Name	Length (mi)
460	Forest Hill Blvd	Prairie Rd	S Florida Mango Rd	0.25
471	Forest Hill Blvd	S Military Tr	Forest Ave	0.25
472	Forest Hill Blvd	Bay Meadows Dr	S Military Tr	0.25
498	Lake Ave	S A St	N E St	0.25
512	Lake Worth Rd	S Jog Rd	Scott Rd	0.26
516	Lucerne Ave	S A St	N E St	0.24
741	S Military Trl	Tellin Ave	Summit Blvd	0.38
742	S Military Trl	Summit Blvd	Holiday Way	0.38
928	Lantana Rd	S Congress Ave	Via Vermilya	0.55
3097	10th Ave N	Davis Rd	S Congress Ave	0.50

**Table 20: Summary of Top 10 Intersections on Motorcycle HIN in District 3**

HIN Intersection ID	East/West Street Name	North/South Street Name
24	10th Ave N	Military Tr
234	Lake Worth Rd	Jog Rd
236	Lake Worth Rd	Sherwood Forest Blvd
256	Forest Hill Blvd	Congress Ave
263	Forest Hill Blvd	Jog Rd
511	Gun Club Rd	Congress Ave
513	Forest Hill Blvd/Sr 882	16th Place South
1735	10th Ave N	Kirk Rd
1855	Melaleuca Ln/6th Ave S	Congress Ave
1982	Melaleuca Ln	Davis Rd

The top 10 pedestrian HIN locations are primarily concentrated along S Military Trail (SR 809), 10<sup>th</sup> Ave N and Lake Worth Road (SR 802). Among the district's top 10 lists, three intersections and four segments also appear in the countywide top 10 pedestrian HIN.



**Figure 11 Top 10 Segments and Intersections on Pedestrian HIN in District 3**

**Table 21: Summary of Top 10 Segments on Pedestrian HIN in District 3**

HIN Segment ID	Street Name	Start Road Name	End Road Name	Length (mi)
499	Lake Ave	S E St	S Dixie Hwy	0.25
508	Lake Worth Rd	S Military Tr	42 <sup>nd</sup> Way S	0.25
516	Lucerne Ave	S A St	N E St	0.24
517	Lucerne Ave	S A St	N E St	0.24
743	S Military Trl	Holiday Way	Forest Hill Blvd	0.38
750	S Military Trl	Line Dr	Purdy Ln	0.25
974	Lake Worth Rd	Kirk Rd	Corrigan Ct	0.19
3102	10th Ave N	S 57 <sup>th</sup> Ave	Jennings Ave	0.78
3104	10th Ave N	10 <sup>th</sup> Ave N	Boutwell Rd	0.31
3204	6th Ave S	S A St	S Dixie Hwy	0.48

**Table 22: Summary of Top 10 Intersections on Pedestrian HIN in District 3**

HIN Intersection ID	East/West Street Name	North/South Street Name
24	10th Ave N	Military Tr
214	Lake Worth Rd	Akron St
230	Lake Worth Rd	Kirk Rd
246	Cresthaven Blvd	Military Tr
265	Forest Hill Blvd	Military Tr
274	Forest Hill Blvd	Parker Ave
551	Melaleuca Ln	Military Tr
1735	10th Ave N	Kirk Rd
1855	Melaleuca Ln/6th Ave S	Congress Ave
1920	10th Ave N	Boutwell Rd

The top 10 bicycle HIN locations are primarily concentrated along S Military Trail (SR 809), 10<sup>th</sup> Ave N and S Jog Road. Among the district's top 10 lists, five intersections and two segments also appear in the countywide top 10 bicycle HIN.

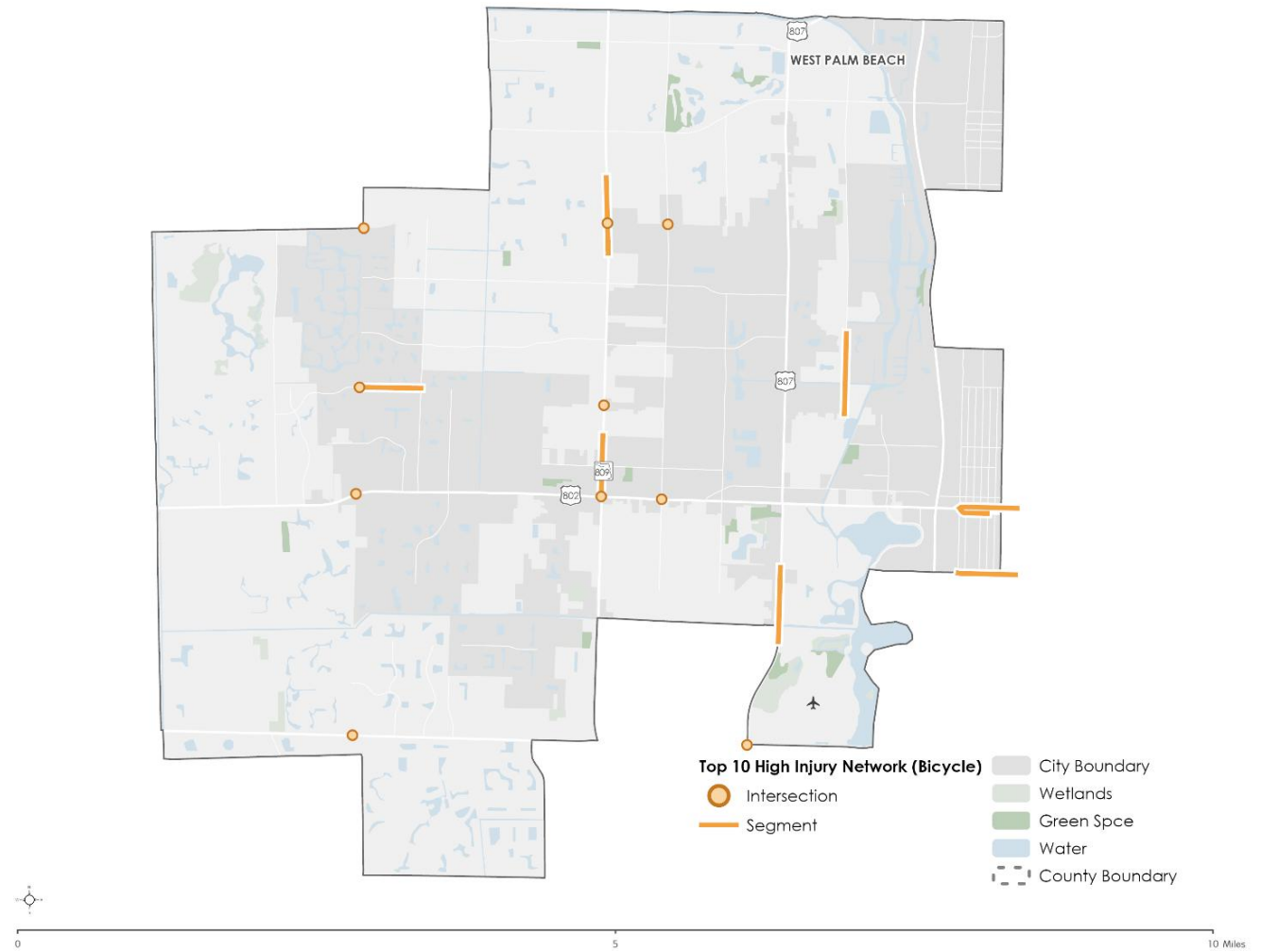


Figure 12 Top 10 Segments and Intersections on Bicycle HIN in District 3

**Table 23: Summary of Top 10 Segments on Bicycle HIN in District 3**

HIN Segment ID	Street Name	Start Road Name	End Road Name	Length (mi)
498	Lake Ave	S A St	N E St	0.25
516	Lucerne Ave	S A St	N E St	0.24
517	Lucerne Ave	N E St	N Dixie Hwy	0.24
727	S Military Trl	Springfield St	Lake Worth Rd	0.51
743	S Military Trl	Holiday Way	Forest Hill Blvd	0.38
749	S Military Trl	Forest Hill Blvd	Canal 8 Rd	0.25
3099	10th Ave N	S Jog Rd	Sherwood Forest Blvd	0.51
3204	6th Ave S	S A St	S Dixie Hwy	0.48
5735	S Congress Ave	Melaleuca Ln	John F Kennedy Dr	0.62
5763	S Florida Mango Rd	Boundbrook Blvd	10 <sup>th</sup> Ave N	0.67

**Table 24: Summary of Top 10 Intersections on Bicycle HIN in District 3**

HIN Intersection ID	East/West Street Name	North/South Street Name
24	10th Ave N	Military Tr
200	Lantana Rd	Congress Ave
230	Lake Worth Rd	Kirk Rd
231	Lake Worth Rd	Military Tr
234	Lake Worth Rd	Jog Rd
263	Forest Hill Blvd	Jog Rd
264	Forest Hill Blvd	Kirk Rd
265	Forest Hill Blvd	Military Tr
1679	10th Ave N	Jog Rd
1758	Lantana Rd	Jog Rd

## DISTRICT 4

The top 10 vehicle HIN locations are primarily concentrated along Glades Road and S Military Trail (SR 809), which are among the five High Crash Priority Corridors. The intersection of W Atlantic Ave and S Military Trail ranked 3 in the countywide vehicle HIN.



Figure 13 Top 10 Segments and Intersections on Vehicle HIN in District 4

**Table 25: Summary of Top 10 Segments on Vehicle HIN in District 4**

<b>HIN Segment ID</b>	<b>Street Name</b>	<b>Start Road Name</b>	<b>End Road Name</b>	<b>Length (mi)</b>
63	S Federal Hwy	E Woolbright Rd	S Federal Hwy	0.17
339	Boynton Beach Blvd	Knuth Rd	Winchester Park Blvd	0.40
528	Federal Hwy	NE 15 <sup>th</sup> Ave	NE 6 <sup>th</sup> Ave	0.70
900	Boynton Beach Blvd	S Congress Ave	Leisureville Blvd	0.35
934	Yamato Rd	NW 53 <sup>rd</sup> St	I-95 (On Ramp)	0.15
993	Glades Rd	NW 22 <sup>nd</sup> Way	N Military Tr	0.20
3522	Boca Del Mar Dr	W Palmetto Park Rd	W Palmetto Park Rd	1.83
4048	E Palmetto Park Rd	NE 5 <sup>th</sup> Ave	N Ocean Blvd	0.45
5755	S Dixie Hwy	W Palmetto Park Blvd	Camino Gardens Blvd	0.67
5758	S Dixie Hwy	Camino Gardens Blvd	SW 18 <sup>th</sup> St	0.79

**Table 26: Summary of Top 10 Intersections on Vehicle HIN in District 4**

<b>HIN Intersection ID</b>	<b>East/West Street Name</b>	<b>North/South Street Name</b>
4	Glades Rd	Airport Rd
10	Glades Rd	St Andrews Blvd
104	Glades Rd	Boca Rio Rd
111	Glades Rd	Powerline Rd
139	West Atlantic Ave	Military Tr
171	Boynton Beach Blvd	Winchester Park Blvd
177	Boynton Beach Blvd	Military Tr
534	Linton Blvd	Military Tr
584	SW 18th St	Powerline Rd
1737	Linton Blvd	Congress Ave

The top 10 motorcycle HIN locations are primarily concentrated along N Federal Hwy (US1) and Ocean Blvd. Among the district's top 10 lists, two intersections and three segments also appear in the countywide top 10 motorcycle HIN.

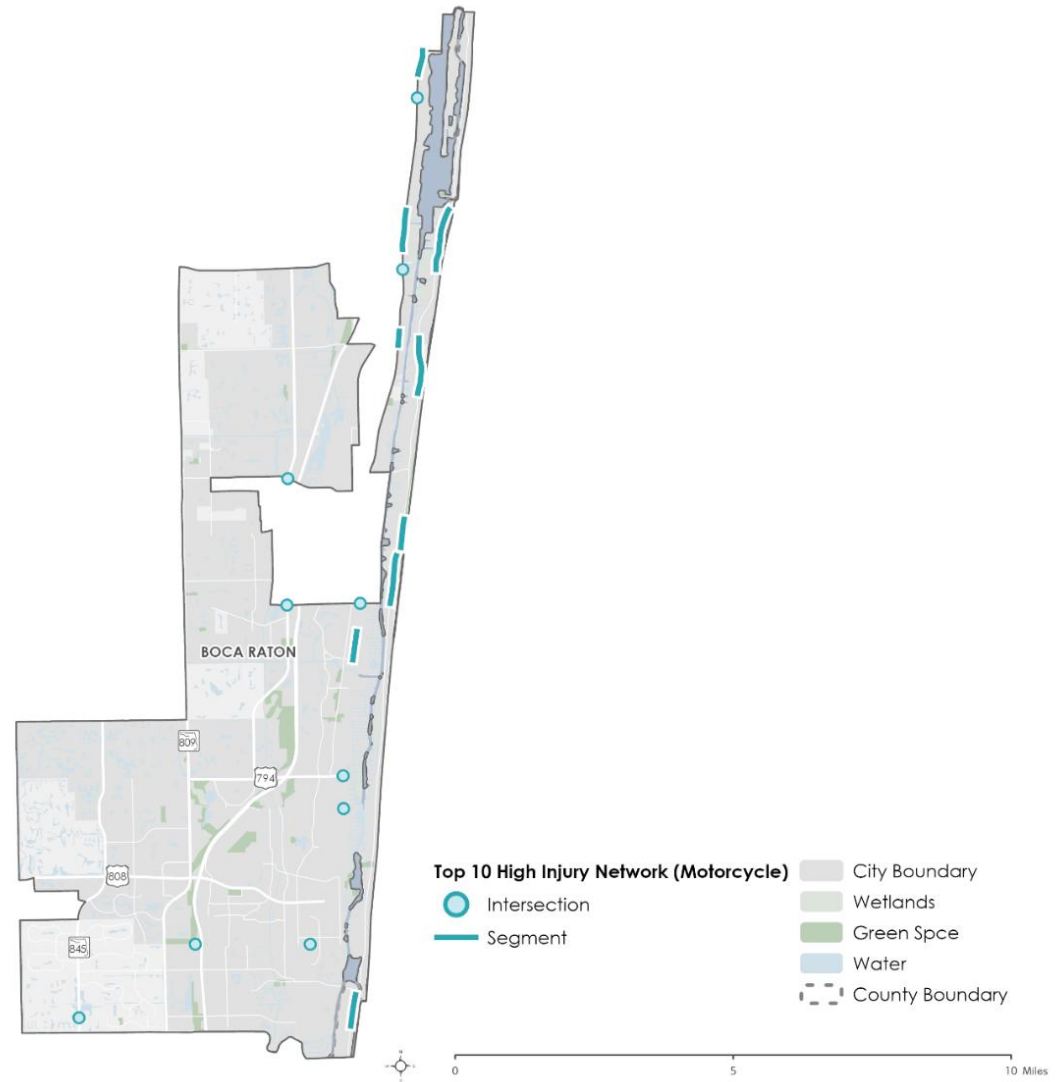


Figure 14 Top 10 Segments and Intersections on Motorcycle HIN in District 4

**Table 27: Summary of Top 10 Segments on Motorcycle HIN in District 4**

HIN Segment ID	Street Name	Start Road Name	End Road Name	Length (mi)
12	Ocean Dr	Lark Dr	Lakeview Dr	1.00
114	S Ocean Blvd	E Atlantic Ave	Casaurina Rd	0.51
242	Federal Hwy	Ave F	Lindell Blvd	0.51
528	Federal Hwy	NE 15 <sup>th</sup> Ave	NE 6 <sup>th</sup> Ave	0.70
585	Ocean Dr	River Dr	E Ocean Ave	0.55
586	Ocean Dr	Island Dr	River Dr	0.55
704	S Dixie Hwy	W Ocean Ave	Prospect Rd	0.43
717	S Federal Hwy	S Federal Hwy	SE 23 <sup>rd</sup> Ave	0.25
766	S Ocean Blvd	E Camino Blvd	S Ocean Blvd	0.57
982	S Ocean Blvd	Carissa Rd	Linton Blvd	0.86

**Table 28: Summary of Top 10 Intersections on Motorcycle HIN in District 4**

HIN Intersection ID	East/West Street Name	North/South Street Name
63	Palmetto Park Rd	Federal Hwy
75	Spanish River Blvd	Sr A1a
86	Yamato Rd	Federal Hwy
120	Linton Blvd	Federal Hwy
169	Ocean Ave	Federal Hwy
194	Hypoluxo Rd	Federal Hwy
584	SW 18th St	Powerline Rd
1737	Linton Blvd	Congress Ave
1815	Lake Ida Rd	Congress Ave
1899	Palmetto Park Rd	I-95 W

The top 10 pedestrian HIN locations are primarily concentrated along N Federal Hwy (US1). The intersection of W Boynton Beach Blvd and S Congress Ave ranked 5 in the countywide pedestrian HIN



Figure 15 Top 10 Segments and Intersections on Pedestrian HIN in District 4

**Table 29: Summary of Top 10 Segments on Pedestrian HIN in District 4**

<b>HIN Segment ID</b>	<b>Street Name</b>	<b>Start Road Name</b>	<b>End Road Name</b>	<b>Length (mi)</b>
139	Atlantic Ave	SE 7 <sup>th</sup> Ave	Venetian Dr	0.26
242	Federal Hwy	Ave F	Lindell Blvd	0.51
528	Federal Hwy	NE 15 <sup>th</sup> Ave	NE 6 <sup>th</sup> Ave	0.70
529	Federal Hwy	E Gateway Blvd	NE 15 <sup>th</sup> Ave	0.45
679	Powerline Rd	W Palmetto Park Rd	Boca Del Mar Dr	0.22
714	S Federal Hwy	SE 6 <sup>th</sup> Ave	E Woolbright Rd	0.44
717	S Federal Hwy	S Federal Hwy	SE 23 <sup>rd</sup> Ave	0.25
773	S Ocean Blvd	A1A	E Ocean Ave	1.08
5105	N Congress Ave	Old Boynton Rd	Ocean Dr	0.52

**Table 30: Summary of Top 10 Intersections on Pedestrian HIN in District 4**

<b>HIN Intersection ID</b>	<b>East/West Street Name</b>	<b>North/South Street Name</b>
60	Camino Real	Federal Hwy
62	Se 3rd Street	Federal Highway
76	Spanish River Blvd	Sr A1a
139	West Atlantic Ave	Military Tr
168	Woolbright Rd	Federal Hwy
172	Boynton Beach Blvd	Congress Ave
1815	Lake Ida Rd	Congress Ave
2008	Linton Blvd	Old Dixie Hwy

The top 10 bicycle HIN locations are primarily concentrated along Ocean Blvd, followed by Linton Blvd. Among the district's top 10 lists, two intersections and six segments also appear in the countywide top 10 bicycle HIN. Notably, the segments along Ocean Blvd rank highly countywide, indicating high bicycle safety risk along the corridor.



**Figure 16 Top 10 Segments and Intersections on Bicycle HIN in District 4**

**Table 31: Summary of Top 10 Segments on Bicycle HIN in District 4**

HIN Segment ID	Street Name	Start Road Name	End Road Name	Length (mi)
12	Ocean Dr	Cordova Ave	Lakeview Dr	1.00
114	S Ocean Blvd	E Atlantic Ave	E Linton Blvd	0.51
585	Ocean Dr	River Dr	E Ocean Ave	0.55
588	Ocean Dr	George Bush Blvd	Thomas St	0.68
717	S Federal Hwy	S Federal Hwy	SE 23 <sup>rd</sup> Ave	0.25
768	S Ocean Blvd	E Linton Blvd	S Ocean Aly	2.09
770	S Ocean Blvd	E Ocean Ave	A1A	2.23
982	S Ocean Blvd	Carissa Rd	E Linton Blvd	0.86
4025	E Camino Real	S Dixie Hwy	Service Rd	0.58
4667	Lake Ida Rd	N Congress Ave	N SWinton Ave	1.21

**Table 32: Summary of Top 10 Intersections on Bicycle HIN in District 4**

HIN Intersection ID	East/West Street Name	North/South Street Name
15	Linton Blvd	A1a
20	Woolbright Rd/Beachway Dr	A1a
63	Palmetto Park Rd	Federal Hwy
68	Glades Rd	NW 2nd Ave
70	Glades Rd	Federal Hwy
96	Palmetto Park Rd	Powerline Rd
139	West Atlantic Ave	Military Tr
622	Lake Ida Rd	Military Tr
1919	Linton Blvd	Homewood Blvd
1975	Linton Boulevard	Lavers Avenue

## DISTRICT 5

The top 10 vehicle HIN locations are primarily concentrated along W Atlantic Ave, Boca Raton Road W and US 441. The intersection of W Atlantic Ave and S Military Trail ranked 3 in the countywide vehicle HIN.

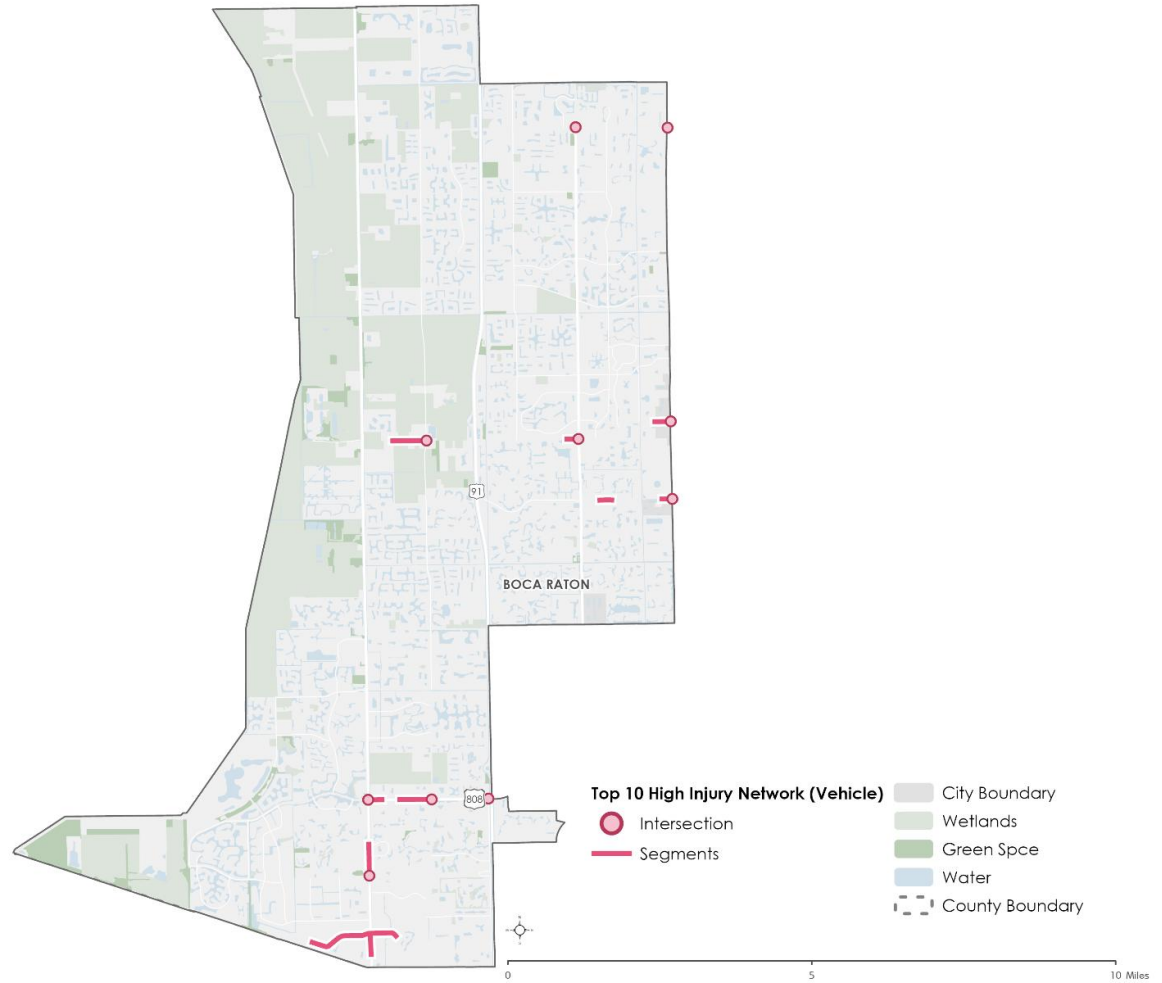


Figure 17 Top 10 Segments and Intersections on Vehicle HIN in District 5

**Table 33: Summary of Top 10 Segments on Vehicle HIN in District 5**

HIN Segment ID	Street Name	Start Road Name	End Road Name	Length (mi)
73	Glades Rd	State Road 7	Carousel Cir W	0.23
136	N State Road 7	Boca Woods Ln	W Palmetto Park Rd	0.52
342	W Atlantic Ave	Seville Ter	S Jog Rd	0.19
489	Glades Rd	95 <sup>th</sup> Ave S	Lyons Rd	0.52
788	N State Road 7	Sandalfoot Blvd	SW 18 <sup>th</sup> St	0.34
868	W Atlantic Ave	Coconut Key Ln	S Military Tr	0.26
872	W Atlantic Ave	Half Mile Rd	Lyons Rd	0.56
4783	Linton Blvd	Linton Blvd	60 <sup>th</sup> Dr N	0.19
5896	Sandalfoot Blvd	Tradewind Rd	SW 65 <sup>th</sup> Ave	1.47
6461	W Linton Blvd	Las Verdes Way	S Military Tr	0.18

**Table 34: Summary of Top 10 Intersections on Vehicle HIN in District 5**

HIN Intersection ID	East/West Street Name	North/South Street Name
91	Sandalfoot Blvd	Sr 7/Us 441
98	Boca Woods La	Sr 7/Us 441
103	Glades Rd	Lyons Rd
613	Champion Way/Bocaire Blvd	Military Tr
1979	SW 3rd St	Lyons Rd

Five intersections and nine segments in District 5 are included in the motorcycle HIN. They were primarily concentrated along US 441, followed by Lyons Rd. Among the district's HIN locations, none are in the county's top 10 motorcycle HIN.

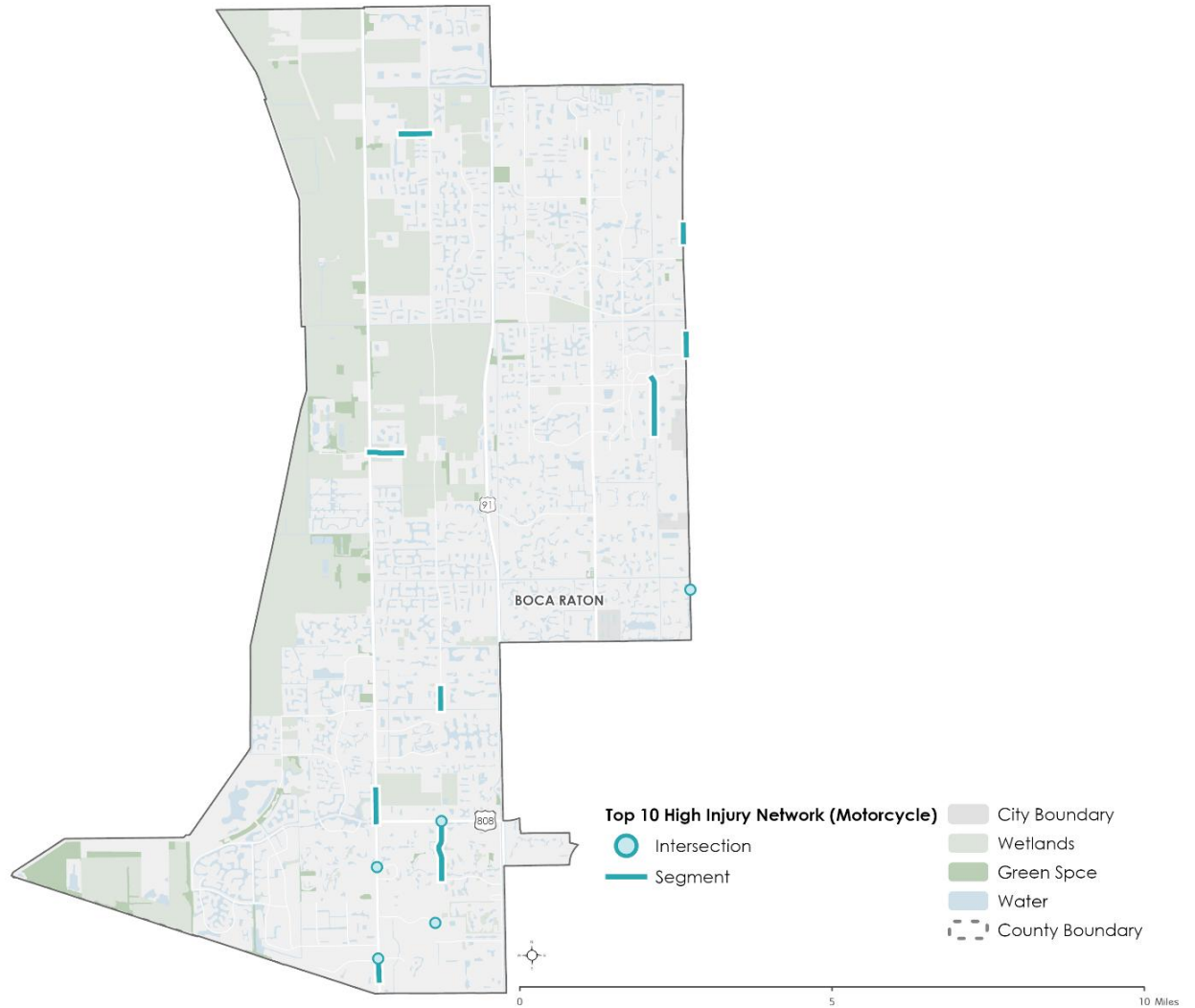


Figure 18 Top 10 Segments and Intersections on Motorcycle HIN in District 5

**Table 35: Summary of Top 10 Segments on Motorcycle HIN in District 5**

<b>HIN Segment ID</b>	<b>Street Name</b>	<b>Start Road Name</b>	<b>End Road Name</b>	<b>Length (mi)</b>
96	S Military Trl	Sunrise Blvd	Via Delray	0.33
227	Boynton Beach Blvd	102 <sup>nd</sup> Pl S	Lyons Rd	0.45
735	S Military Trl	Golf Rd	Piper Glen Blvd	0.27
779	N State Road 7	Kimberly Blvd	Glades Rd	0.51
788	N State Road 7	Sandalfoot Blvd W	SW 18 <sup>th</sup> St	0.35
873	W Atlantic Ave	US 441	Half Mile Rd	0.51
4852	Lyons Rd	Boca Raton Rd W	Boca Lago Blvd	0.94
4856	Lyons Rd	Astaire Ave	Yamato Rd	0.31
6026	Sims Rd	Lake Ida Rd	W Atlantic Ave	0.90

**Table 36: Summary of Top 10 Intersections on Motorcycle HIN in District 5**

<b>HIN Intersection ID</b>	<b>East/West Street Name</b>	<b>North/South Street Name</b>
91	Sandalfoot Blvd	Sr 7/Us 441
98	Boca Woods La	Sr 7/Us 441
103	Glades Rd	Lyons Rd
613	Champion Way/Bocaire Blvd	Military Tr
1979	SW 3rd St	Lyons Rd

Five intersections and four segments in District 5 are in pedestrian HIN. Among the district's HIN locations, none are in the county's top 10 pedestrian HIN.

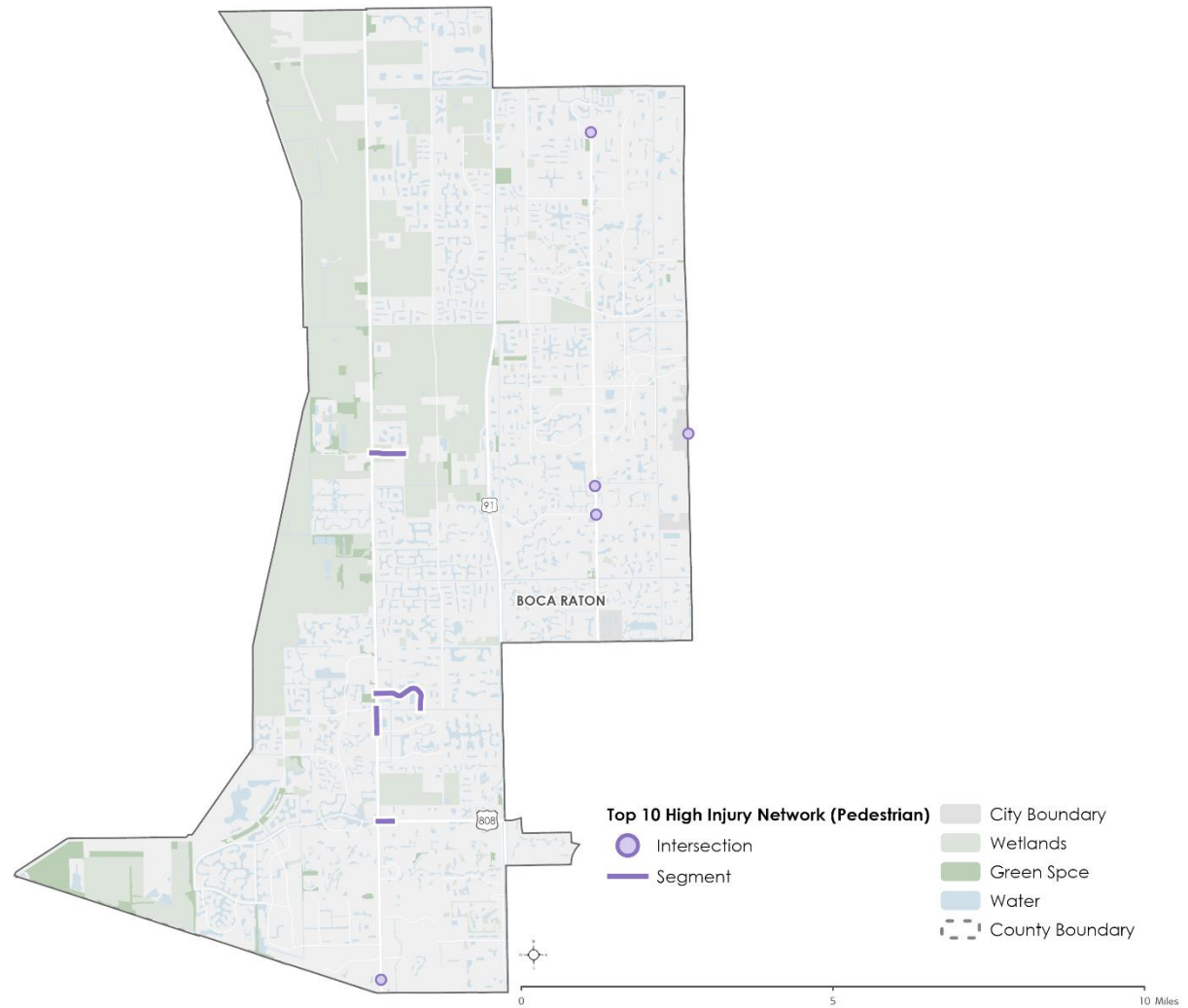


Figure 19 Top 10 Segments and Intersections on Pedestrian HIN in District 5

**Table 37: Summary of Top 10 Segments on Pedestrian HIN in District 5**

<b>HIN Segment ID</b>	<b>Street Name</b>	<b>Start Road Name</b>	<b>End Road Name</b>	<b>Length (mi)</b>
73	Glades Rd	State Road 7	Carousel Cir W	0.23
783	N State Road 7	Yamato Rd	New England Blvd	0.40
873	W Atlantic Ave	US 441	Half Mile Rd	0.51
4686	Lakeridge Blvd	US 441	Yamato Rd	1.03

**Table 38: Summary of Top 10 Intersections on Pedestrian HIN in District 5**

<b>HIN Intersection ID</b>	<b>East/West Street Name</b>	<b>North/South Street Name</b>
90	SW 18th St/Marina Blvd	Sr 7/Us441
139	West Atlantic Ave	Military Tr
185	Boynton Beach Blvd	Jog Rd
1957	Normandy La	Jog Rd
2011	Linton Blvd	Jog Rd

Seven intersections and five segments in District 5 are included in the bicycle HIN. They were primarily concentrated along S Military Trail (SR 809), followed by US 441. Palmetto Park Road Eb to Boca Rio Road Sb ranked 7 in the countywide bicycle HIN.

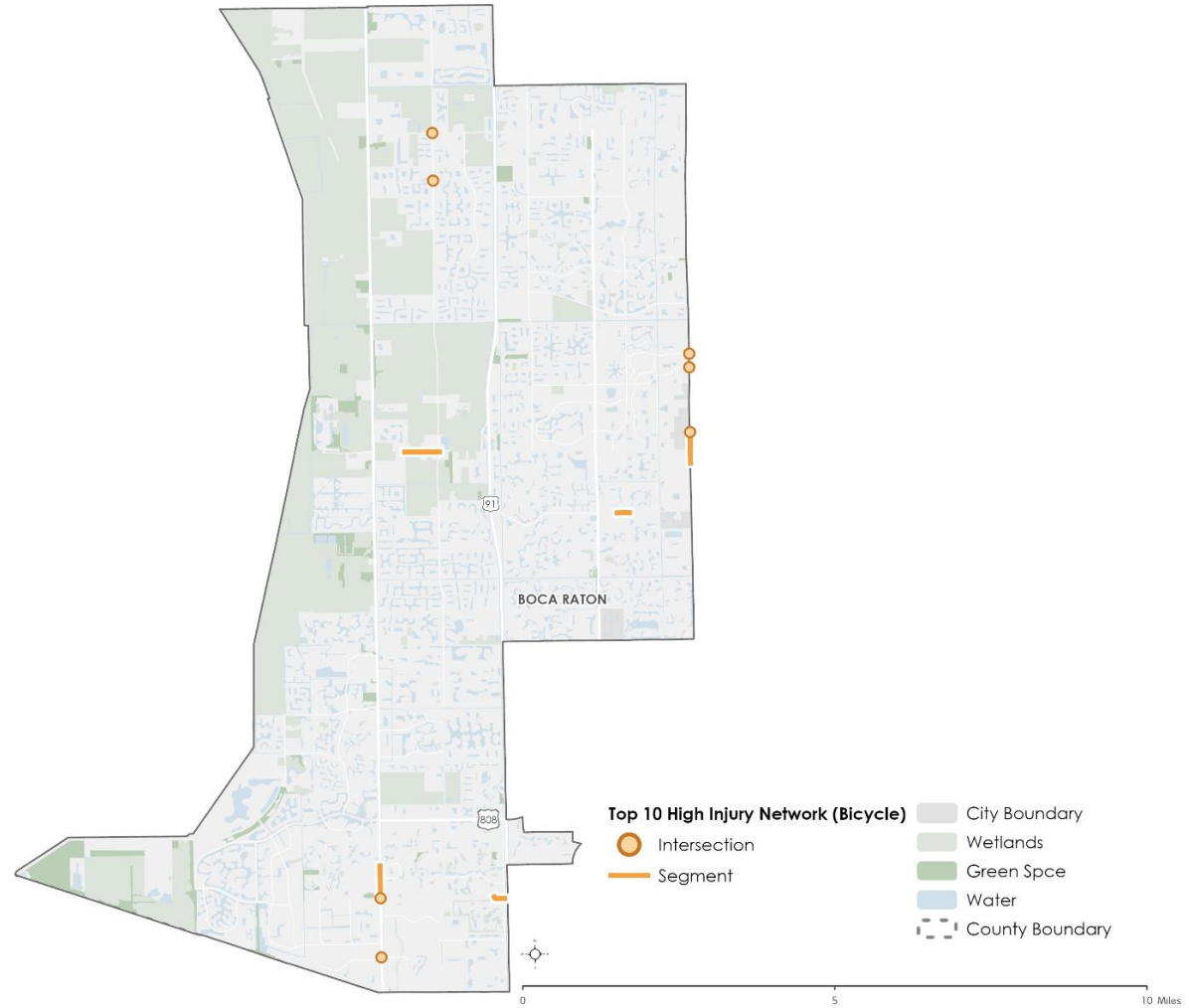


Figure 20 Top 10 Segments and Intersections on Bicycle HIN in District 5

**Table 39: Summary of Top 10 Segments on Bicycle HIN in District 5**

<b>HIN Segment ID</b>	<b>Street Name</b>	<b>Start Road Name</b>	<b>End Road Name</b>	<b>Length (mi)</b>
98	S Military Trl	W Atlantic Ave	Lake Blvd	0.49
136	N State Road 7	Central Park Blvd N	W Palmetto Park Rd	0.52
872	W Atlantic Ave	Half Mile Rd	Lyrons Rd	0.56
4783	Linton Blvd	Linton Blvd	60 <sup>th</sup> Dr N	0.19
5429	Palmetto Park Rd Eb To Boca Rio Rd Sb	W Palmetto Park Blvd	Boca Rio Rd	0.18

**Table 40: Summary of Top 10 Intersections on Bicycle HIN in District 5**

<b>HIN Intersection ID</b>	<b>East/West Street Name</b>	<b>North/South Street Name</b>
91	Sandalfoot Blvd	Sr 7/Us 441
95	Palmetto Park Rd	Sr 7/Us 441
139	West Atlantic Ave	Military Tr
176	Boynton Beach Blvd	Lyons Rd
547	Via Delray Rd	Military Tr
622	Lake Ida Rd	Military Tr
1843	Lake Royal Rd/Canyon Lakes Blvd	Lyons Rd

## DISTRICT 6

The top 10 vehicle HIN locations are primarily concentrated along Southern Blvd and US 441. Among the district's top 10 lists, two intersections also appear in the countywide top 10 vehicle HIN.

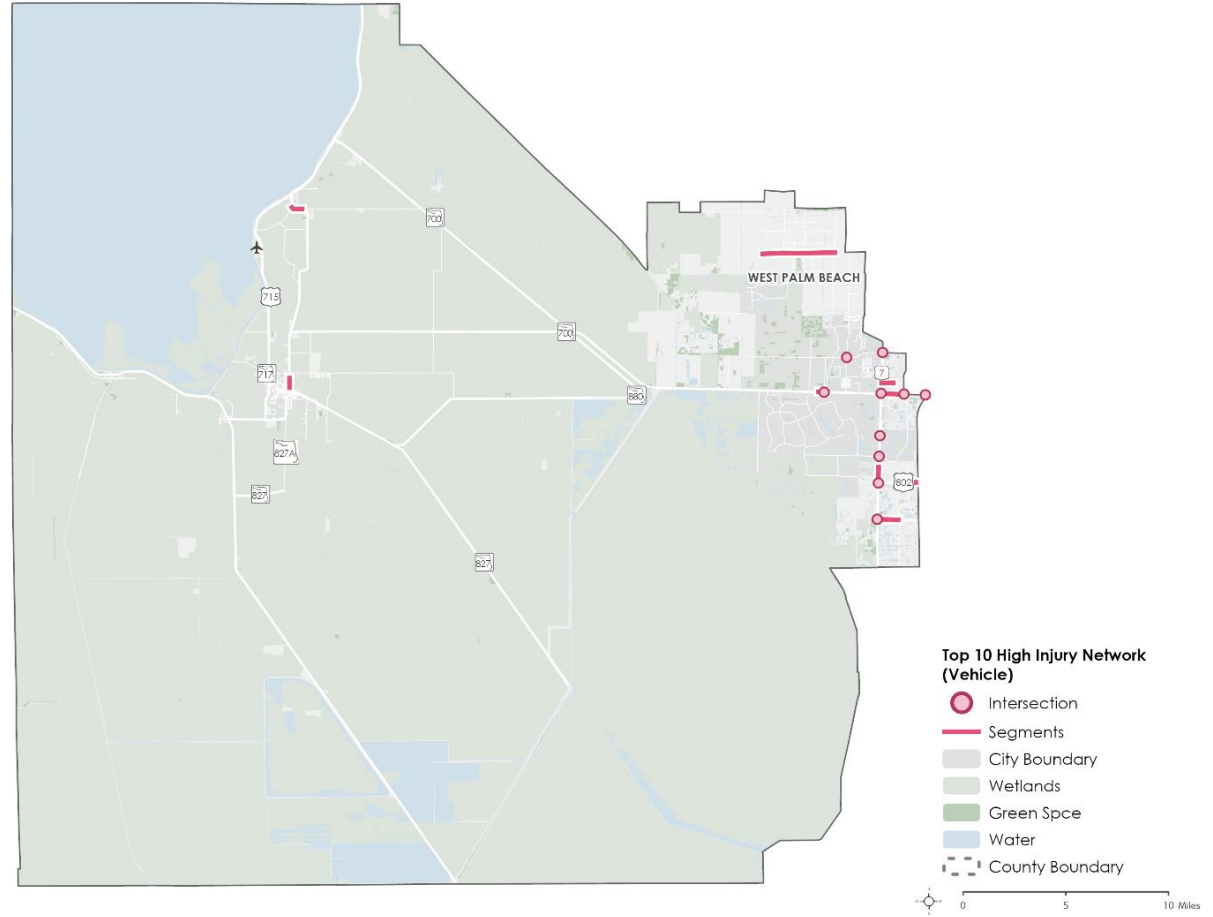


Figure 21 Top 10 Segments and Intersections on Vehicle HIN in District 6

**Table 41: Summary of Top 10 Segments on Vehicle HIN in District 6**

HIN Segment ID	Street Name	Start Road Name	End Road Name	Length (mi)
288	Southern Blvd	N State Road 7	Fairgrounds Rd	0.65
289	Southern Blvd	Fairgrounds Rd	Lyons Rd	0.47
330	Southern Blvd	Palms West Dr	Crestwood Blvd N	0.27
434	7th St	McClure Rd	Padgett Cir	0.52
504	Lake Worth Rd	Blanchette Trl	Akron Rd	0.38
545	Main St	NW Avenue H	W Canal St N	0.46
786	N State Road 7	Palomino Dr	Lake Worth Rd	0.76
4705	Lantana Rd	S State Road 7	Lyons Rd	0.70
5340	Orange Blvd	Seminole Pratt Whitney Rd	Coconut Blvd	3.51
6545	Weisman Way	N State Road 7	Sansburys Way	0.58

**Table 42: Summary of Top 10 Intersections on Vehicle HIN in District 6**

HIN Intersection ID	East/West Street Name	North/South Street Name
201	Lantana Rd	Sr 7/Us 441
216	Lake Worth Rd	Sr 7/Us 441
254	Forest Hill Blvd	Sr 7/Us 441
300	Southern Blvd	Pike Rd
302	Southern Blvd	Sansbury's Way
305	Southern Blvd	Sr 7/Us 441
309	Southern Blvd	Forest Hill/Crestwood Blvd
353	Okeechobee Blvd	Sr 7/Us 441
515	Stribling Way	Sr7/Us441

Six intersections in District 6 are included in the motorcycle HIN. They were primarily concentrated along Southern Blvd. The top 10 motorcycle HIN segments are along SR 15 (Belle Glade Road/E 7<sup>th</sup> St / S Lake Ave). Among the district's HIN locations, none are in the countywide top 10 motorcycle HIN.

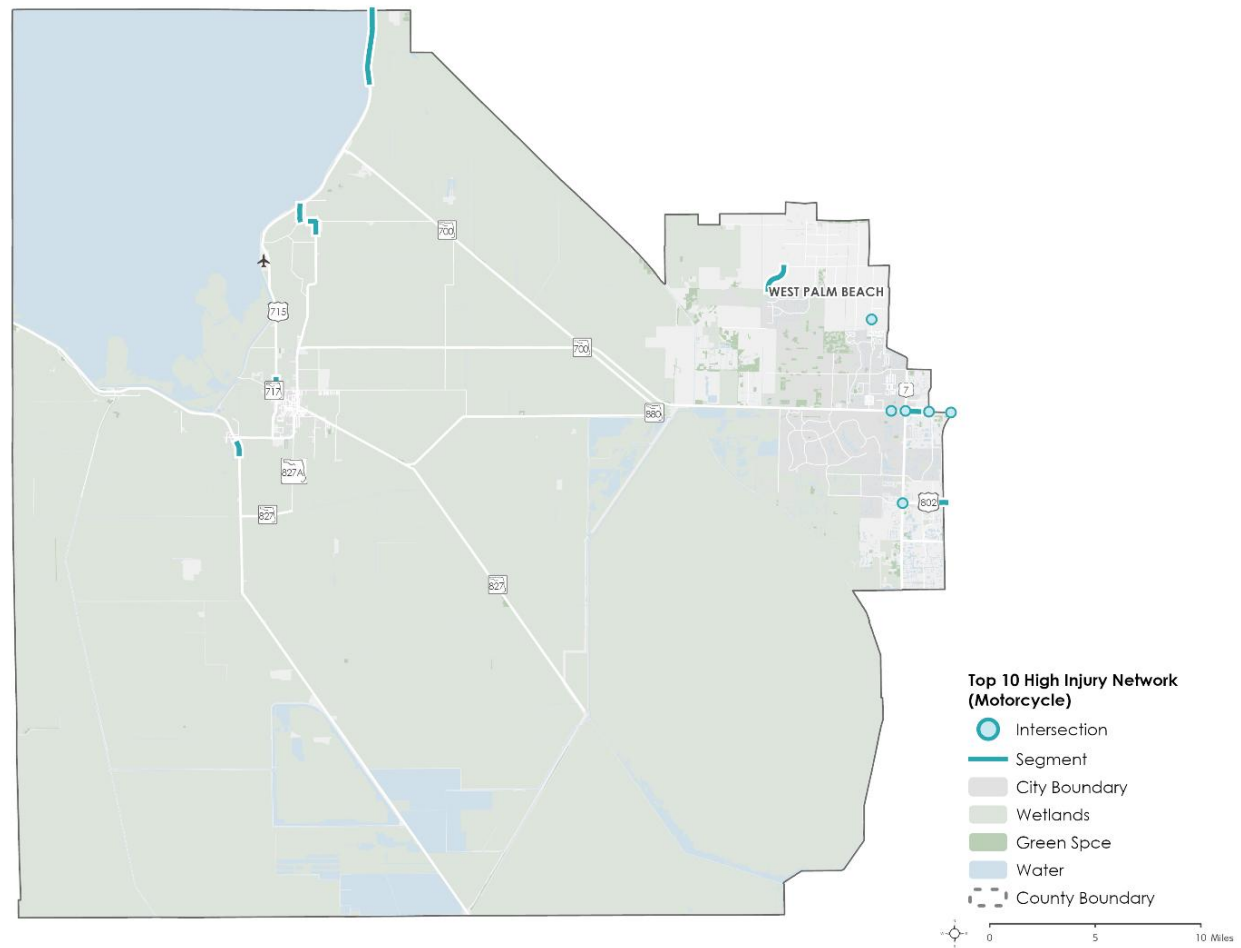


Figure 22 Top 10 Segments and Intersections on Motorcycle HIN in District 6

**Table 43: Summary of Top 10 Segments on Motorcycle HIN in District 6**

<b>HIN Segment ID</b>	<b>Street Name</b>	<b>Start Road Name</b>	<b>End Road Name</b>	<b>Length (mi)</b>
288	Southern Blvd	Range Line Rd	Fairgrounds Rd	0.65
407	Belle Glade Rd	State Market Rd	Shirley Dr	0.48
435	7th St	Padgett Cir	State Market Rd	0.25
718	Lake Ave	E 1 <sup>st</sup> St	E 3 <sup>rd</sup> St	0.24
719	Lake Ave	E 3 <sup>rd</sup> St	McClure Rd	0.42
854	Us Highway 27 S	SW 1 <sup>st</sup> St	G2 Canal Rd	0.49
859	Us Highway 98	SW Kanner Hwy	US441	3.45
955	NW 16th St	Teddar Rd	NW Avenue L	0.51
1020	Lake Worth Rd	Cindy Ln	Akron Rd	0.21

**Table 44: Summary of Top 10 Intersections on Motorcycle HIN in District 6**

<b>HIN Intersection ID</b>	<b>East/West Street Name</b>	<b>North/South Street Name</b>
216	Lake Worth Rd	Sr 7/Us 441
300	Southern Blvd	Pike Rd
302	Southern Blvd	Sansbury's Way
305	Southern Blvd	Sr 7/Us 441
306	Sr 80 (Southern Blvd)	103rd Ave
1997	Orange Grove Blvd	Royal Palm Beach Blvd

One intersection and six segments in District 6 are included in the pedestrian HIN. Among the district's HIN locations, none are in the countywide top 10 pedestrian HIN.

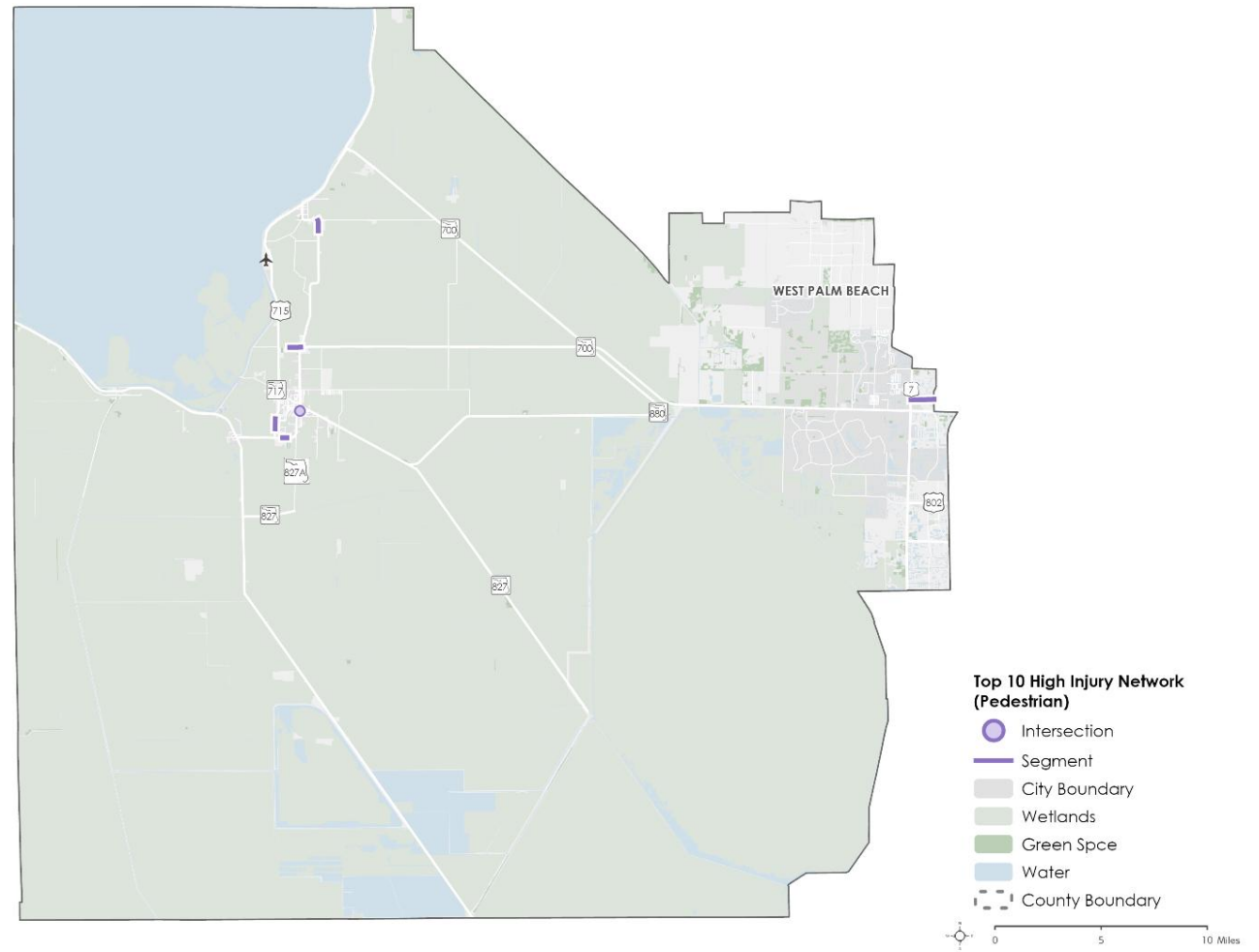


Figure 23 Top 10 Segments and Intersections on Pedestrian HIN in District 6

**Table 45: Summary of Top 10 Segments on Pedestrian HIN in District 6**

<b>HIN Segment ID</b>	<b>Street Name</b>	<b>Start Road Name</b>	<b>End Road Name</b>	<b>Length (mi)</b>
148	Main St	Roosevelt St	Bell Glade Gdns	0.18
407	Belle Glade Rd	State Market Rd	Shirley Dr	0.48
497	Hooker Hwy	Jacaranda Ave	N Main St	0.53
1065	State Road 715	SW Avenue H	Pioneer Park Rd	0.47
6545	Weisman Way	Range Line Rd	Fairgrounds Rd	0.58
6546	Weisman Way	Fairgrounds Rd	Sansbury Way	0.50

**Table 46: Summary of Top 10 Intersections on Pedestrian HIN in District 6**

<b>HIN Intersection ID</b>	<b>East/West Street Name</b>	<b>North/South Street Name</b>
37	SW Ave E/Cr 880/Martin Luther King	Main St/Sr 15

Two intersections in District 6 are included in the bicycle HIN while no segments are identified. Among the district's HIN locations, none are in the countywide top 10 bicycle HIN.

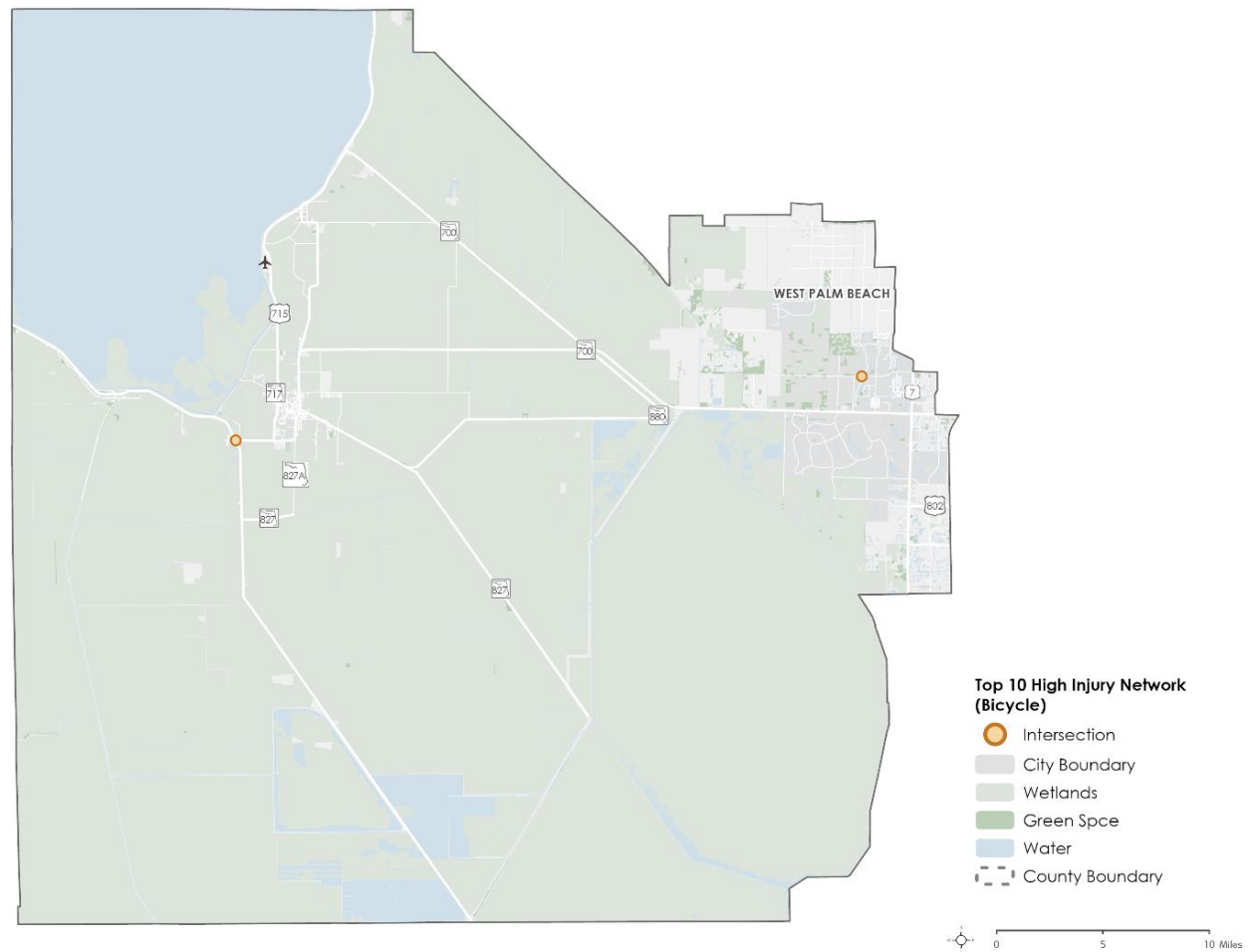


Figure 24 Top 10 Segments and Intersections on Bicycle HIN in District 6

**Table 47: Summary of Top 10 Intersections on Bicycle HIN in District 6**

<b>HIN Intersection ID</b>	<b>East/West Street Name</b>	<b>North/South Street Name</b>
12	SR 80	SR 27
1836	Okeechobee Blvd	Crestwood Blvd

## DISTRICT 7

The top 10 vehicle HIN locations are primarily concentrated along N Military Trail (SR 809) and Palm Beach Lakes Blvd. Among the district's top 10 lists, three intersections and three segments also appear in the countywide top 10 vehicle HIN.

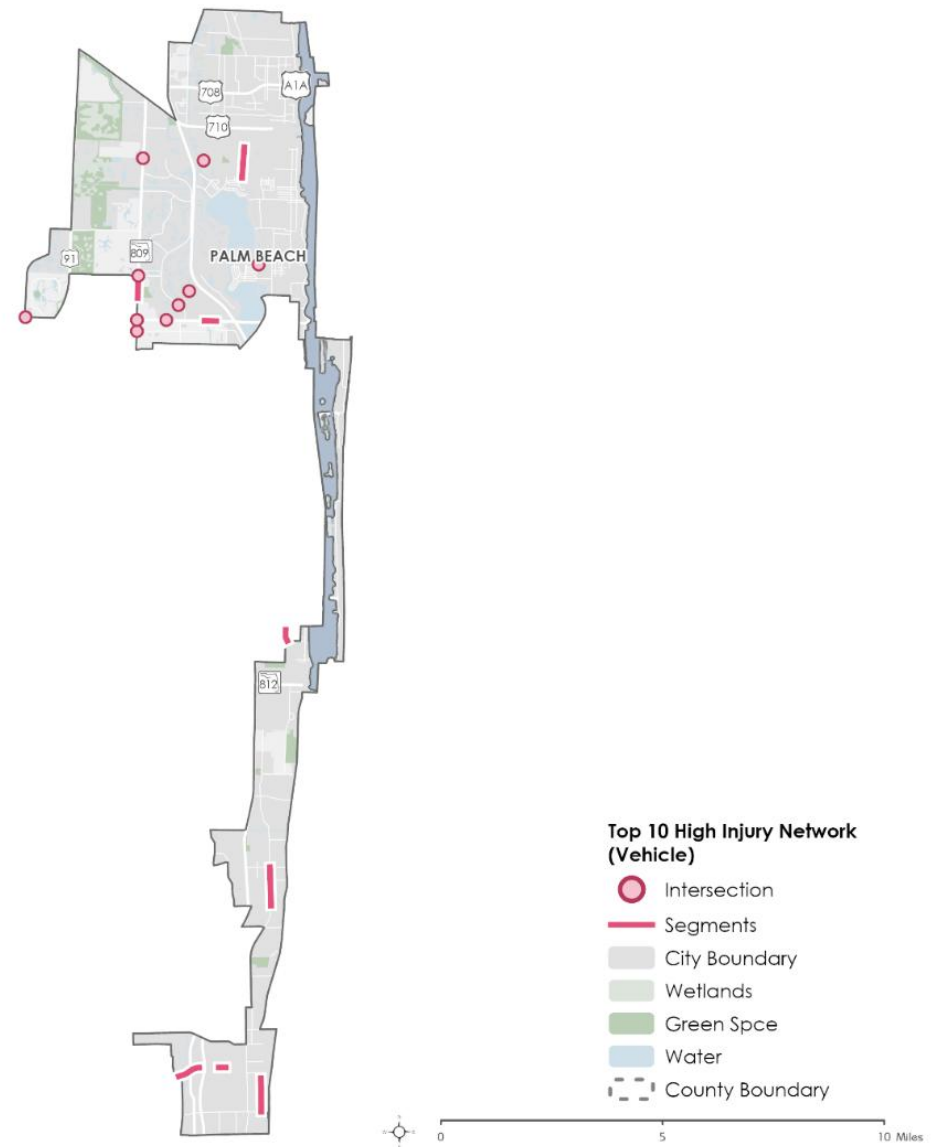


Figure 25 Top 10 Segments and Intersections on Vehicle HIN in District 7

**Table 48: Summary of Top 10 Segments on Vehicle HIN in District 7**

HIN Segment ID	Street Name	Start Road Name	End Road Name	Length (mi)
145	W Atlantic Ave	NW 10 <sup>th</sup> Ave	NW 7 <sup>th</sup> Ave	0.15
265	SE 5th Ave	SE 2 <sup>nd</sup> St	SE 5 <sup>th</sup> St	0.32
309	Okeechobee Blvd	N Congress Ave	Church St	0.26
558	N Military Trl	Community Dr	Old Military Trl	0.50
699	S Dixie Hwy	9 <sup>th</sup> Ave S	12 <sup>th</sup> Ave S	0.25
799	SE 5th Ave	SE 5 <sup>th</sup> St	SE 10 <sup>th</sup> St	0.44
866	W Atlantic Ave	NW 24 <sup>th</sup> Ave	S Congress Ave	0.29
1067	W Atlantic Ave	N Congress Ave	I-95 (On Ramp)	0.22
3339	Australian Ave	Hill Ave	45 <sup>th</sup> St	0.69
5861	S Seacrest Blvd	W Ocean Ave	W Woolbright Rd	0.86

**Table 49: Summary of Top 10 Intersections on Vehicle HIN in District 7**

HIN Intersection ID	East/West Street Name	North/South Street Name
321	Westgate Ave/Elmhurst Rd	Military Tr
338	Okeechobee Blvd	Palm Bch Lakes Blvd/Wabasso Dr
341	Okeechobee Blvd	Military Tr
347	Okeechobee Blvd	Jog Rd
357	Community Dr	Military Tr
371	45th St	Military Tr
1666	Palm Beach Lakes Blvd	Robbins Dr
1726	Palm Beach Lakes Blvd	Australian Ave
1771	Palm Beach Lakes Blvd	Spencer Dr/Village Blvd
1871	45th St	Congress Ave

The top 10 motorcycle HIN locations are primarily concentrated along N Military Trail (SR 809) and N Federal Hwy (US1). Among the district's top 10 lists, four intersections and two segments also appear in the countywide top 10 motorcycle HIN.

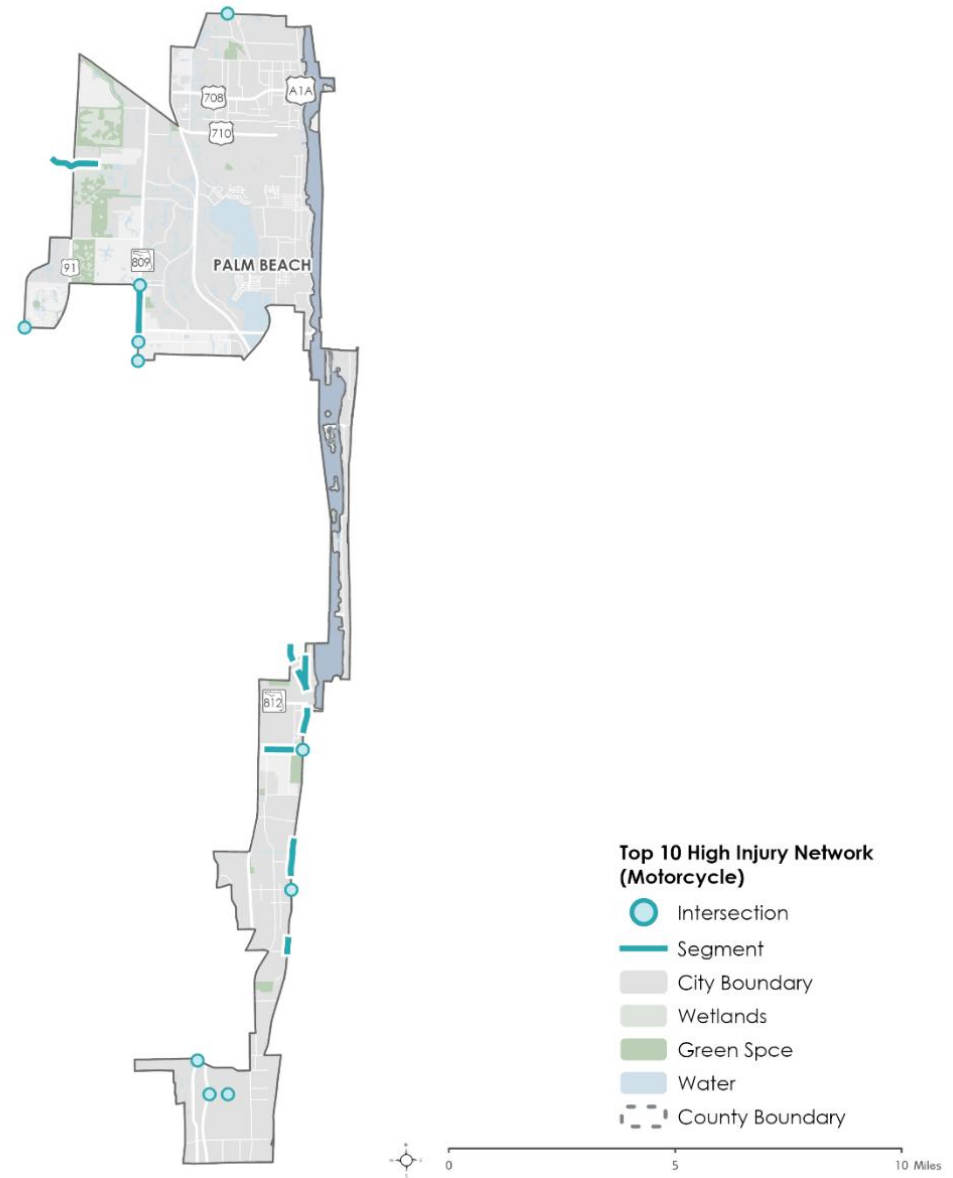


Figure 26 Top 10 Segments and Intersections on Motorcycle HIN in District 7

**Table 50: Summary of Top 10 Segments on Motorcycle HIN in District 7**

HIN Segment ID	Street Name	Start Road Name	End Road Name	Length (mi)
528	Federal Hwy	NE 15 <sup>th</sup> Ave	NE 6 <sup>th</sup> Ave	0.70
557	N Military Trl	Old Military Trl	Royal Palm Way	0.50
558	N Military Trl	Community Dr	Old Military Trl	0.50
699	S Dixie Hwy	9 <sup>th</sup> Ave S	12 <sup>th</sup> Ave S	0.25
701	S Dixie Hwy	15 <sup>th</sup> Ave S	E Winward Way	0.35
704	S Dixie Hwy	E Ocean Ave	Prospect Rd	0.43
712	S Federal Hwy	12 <sup>th</sup> Ave S	N Dixie Hwy	0.63
717	S Federal Hwy	S Federal Hwy	SE 23 <sup>rd</sup> Ave	0.25
3165	45th St	N Jog Rd	Premier Park Dr	0.97
4475	Hypoluxo Rd	Seacrest Blvd	S Broadway	0.52

**Table 51: Summary of Top 10 Intersections on Motorcycle HIN in District 7**

HIN Intersection ID	East/West Street Name	North/South Street Name
146	West Atlantic Ave	NW/SW 8th Ave
149	West Atlantic Ave	I-95 East
169	Ocean Ave	Federal Hwy
194	Hypoluxo Rd	Federal Hwy
318	Cherry Rd	Military Tr
321	Westgate Ave/Elmhurst Rd	Military Tr
347	Okeechobee Blvd	Jog Rd
357	Community Dr	Military Tr
549	Northlake Blvd	Old Dixie Hwy
1815	Lake Ida Rd	Congress Ave

The top 10 pedestrian HIN locations are primarily concentrated along Palm Beach Lakes Blvd and US 1 (Broadway/ S Dixie Hwy/SE 5th Ave). Among the district's top 10 lists, five intersections and three segments also appear in the countywide top 10 pedestrian HIN.

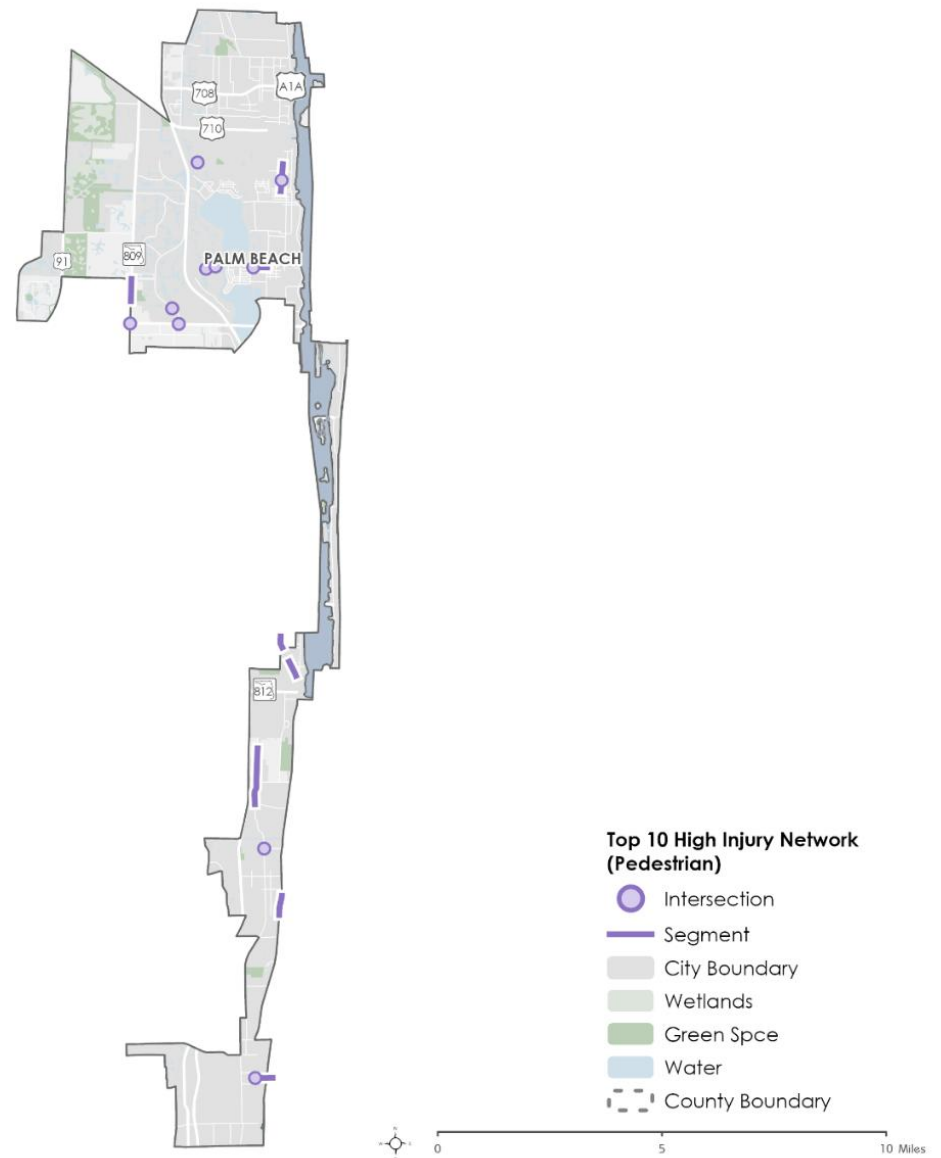


Figure 27 Top 10 Segments and Intersections on Pedestrian HIN in District 7

**Table 52: Summary of Top 10 Segments on Pedestrian HIN in District 7**

HIN Segment ID	Street Name	Start Road Name	End Road Name	Length (mi)
139	Atlantic Ave	SE 7 <sup>th</sup> Ave	Venetian Dr	0.26
284	Broadway	52 <sup>nd</sup> St	49 <sup>th</sup> St	0.16
414	Broadway	45 <sup>th</sup> St	40 <sup>th</sup> St	0.24
558	N Military Trl	Community Dr	Old Military Trl	0.50
699	S Dixie Hwy	9 <sup>th</sup> Ave S	12 <sup>th</sup> Ave S	0.25
701	S Dixie Hwy	Washington Ave	E Winward Way	0.35
714	S Federal Hwy	SE 6 <sup>th</sup> Ave	E Woolbright Rd	0.44
5193	N Seacrest Blvd	Mentone Rd	E Gateway Blvd	1.00
5386	Palm Beach Lakes Blvd	N Australian Ave	N Tamarind Ave	0.30
5950	Seacrest Blvd	Old Spanish Trl	Mentone Rd	0.25

**Table 53: Summary of Top 10 Intersections on Pedestrian HIN in District 7**

HIN Intersection ID	East/West Street Name	North/South Street Name
139	West Atlantic Ave	Military Tr
155	East Atlantic Ave	Ne/Se 5th Ave
337	Okeechobee Blvd	Spencer Dr
341	Okeechobee Blvd	Military Tr
368	45th St	Broadway
1726	Palm Beach Lakes Blvd	Australian Ave
1771	Palm Beach Lakes Blvd	Spencer Dr/Village Blvd
1865	Palm Beach Lakes Blvd	Congress Ave
1866	Martin Luther King Blvd/NW 10th Ave	Seacrest Blvd

The top 10 bicycle HIN locations are primarily concentrated along N Military Trail (SR 809), S Ocean Blvd and US 1 (S Dixie Hwy/S Federal Hwy). The intersection of Okeechobee Blvd and N Jog Rd ranked top in the countywide bicycle HIN.

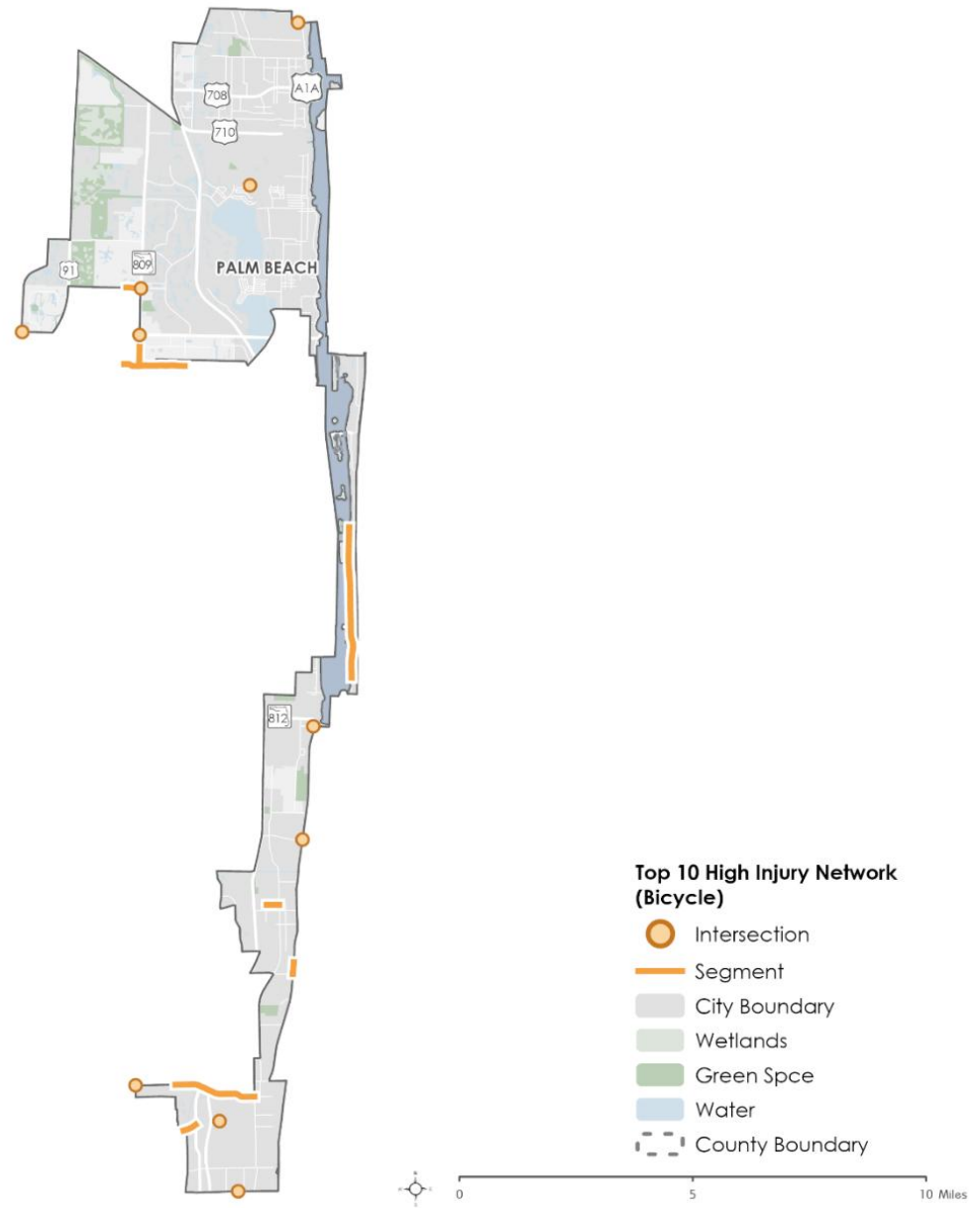


Figure 28 Top 10 Segments and Intersections on Bicycle HIN in District 7

**Table 54: Summary of Top 10 Segments on Bicycle HIN in District 7**

HIN Segment ID	Street Name	Start Road Name	End Road Name	Length (mi)
550	N Military Trl	Elmhurst Rd	Cierry Rd	0.38
617	N Ocean Blvd	A1A	Lake Ave	2.15
717	S Federal Hwy	S Federal Hwy	SE 23 <sup>rd</sup> Ave	0.25
772	S Ocean Blvd	Lake Ave	A1A	1.08
866	W Atlantic Ave	NW 24 <sup>th</sup> Ave	N Congress Ave	0.29
886	Boynton Beach Blvd	NW 3 <sup>rd</sup> St	N Seacrest Blvd	0.27
3734	Cherry Rd	Park Ln	Seminole Blvd	1.31
3825	Community Dr	Tennis Club Dr	N Military Tr	0.10
4667	Lake Ida Rd	N Congress Ave	N SWinton Ave	1.21
4670	Lake Ida Rd	Rainberry Blvd	N Congress Ave	0.53

**Table 55: Summary of Top 10 Intersections on Bicycle HIN in District 7**

HIN Intersection ID	East/West Street Name	North/South Street Name
148	West Atlantic Ave	NW/SW 12th Ave
192	Gateway Blvd	Federal Hwy
196	Ocean Ave	Federal Hwy
341	Okeechobee Blvd	Military Tr
347	Okeechobee Blvd	Jog Rd
357	Community Dr	Military Tr
402	Palmetto Rd/Lake Shore Dr	Us 1
1700	45th St	Australian Ave
1839	Lake Ida Rd	Barwick Rd
1975	Linton Boulevard	Lavers Avenue